

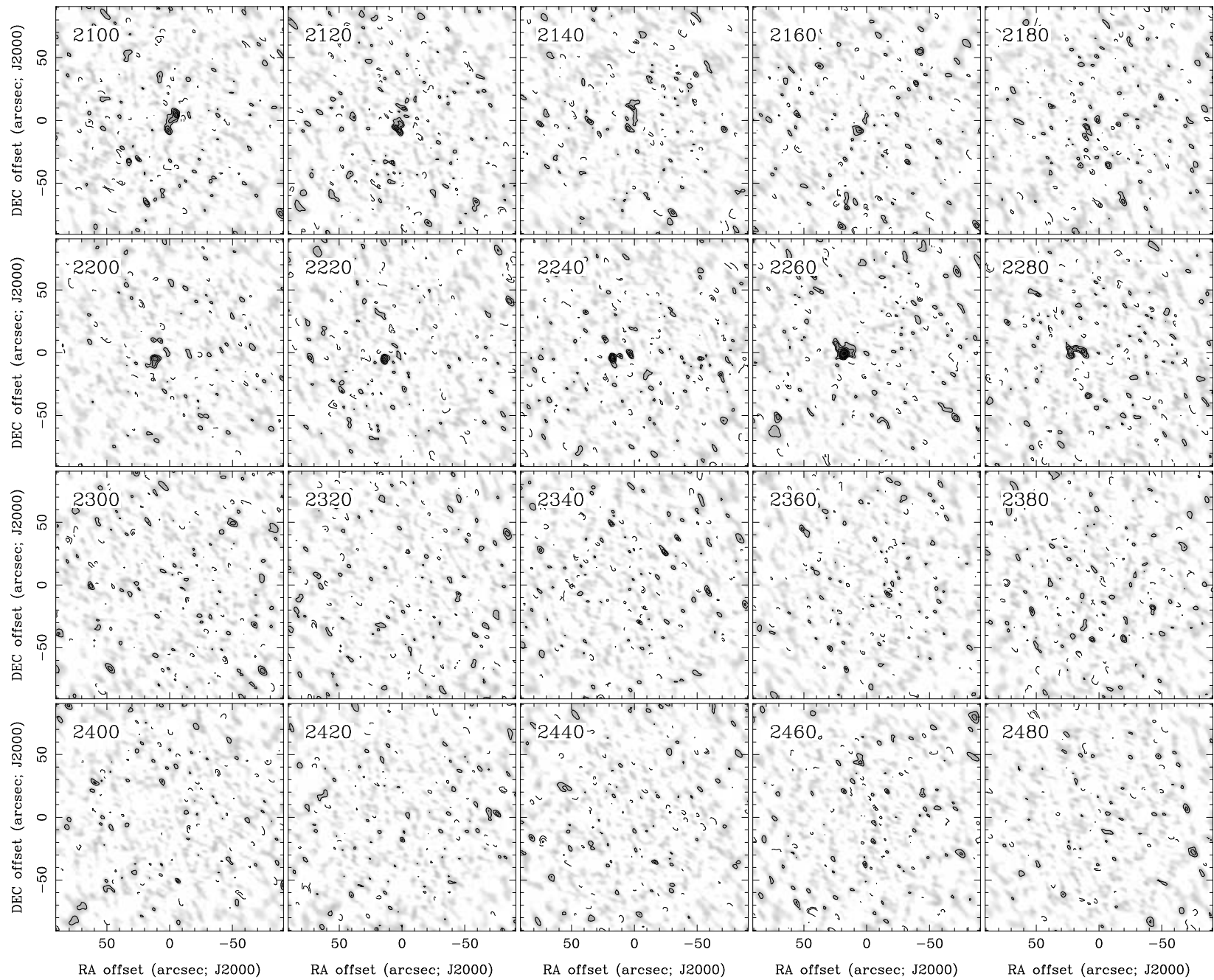
RA, DEC, VRAD = 09:32:06.200, +08:26:30.40, 1.70000E+03 km/s at pixel (154.00, 151.00, 1.00)

Spatial region : 64,61 to 244,241 Spectral inc/bin : 1/1 =20/20 (km/s)

Pixel map image: NGC2906.co.cmnorm (NGC2906) Min/max=-0.05027/0.05876 Range = 0 to 0.09909 JY/BEAM (lin)

Contour image: NGC2906.co.cmnorm (NGC2906) Min/max=-0.05027/0.05876 Contours x 0.01156 JY/BEAM

Contours : -14, -12, -10, -8, -6, -5, -4, -3, -2, 2, 3, 4, 5, 6, 8, 10, 12, 14



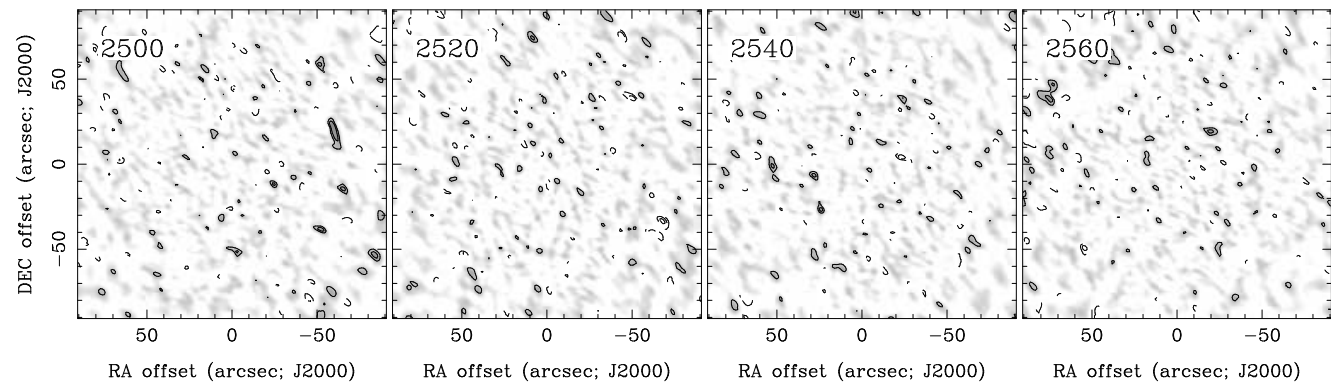
RA, DEC, VRAD = 09:32:06.200, +08:26:30.40, 1.70000E+03 km/s at pixel (154.00, 151.00, 1.00)

Spatial region : 64,61 to 244,241 Spectral inc/bin : 1/1 =20/20 (km/s)

Pixel map image: NGC2906.co.cmnorm (NGC2906) Min/max=-0.04065/0.04049 Range = 0 to 0.09909 JY/BEAM (lin)

Contour image: NGC2906.co.cmnorm (NGC2906) Min/max=-0.04065/0.04049 Contours x 0.01156 JY/BEAM

Contours : -14, -12, -10, -8, -6, -5, -4, -3, -2, 2, 3, 4, 5, 6, 8, 10, 12, 14



RA, DEC, VRAD = 09:32:06.200, +08:26:30.40, 1.70000E+03 km/s at pixel (154.00, 151.00, 1.00)  
 Spatial region : 64,61 to 244,241 Spectral inc/bin : 1/1 =20/20 (km/s)  
 Pixel map image: NGC2906.co.cmnorm (NGC2906) Min/max=-0.04225/0.04086 Range = 0 to 0.09909 JY/BEAM (lin)  
 Contour image: NGC2906.co.cmnorm (NGC2906) Min/max=-0.04225/0.04086 Contours x 0.01156 JY/BEAM  
 Contours : -14, -12, -10, -8, -6, -5, -4, -3, -2, 2, 3, 4, 5, 6, 8, 10, 12, 14