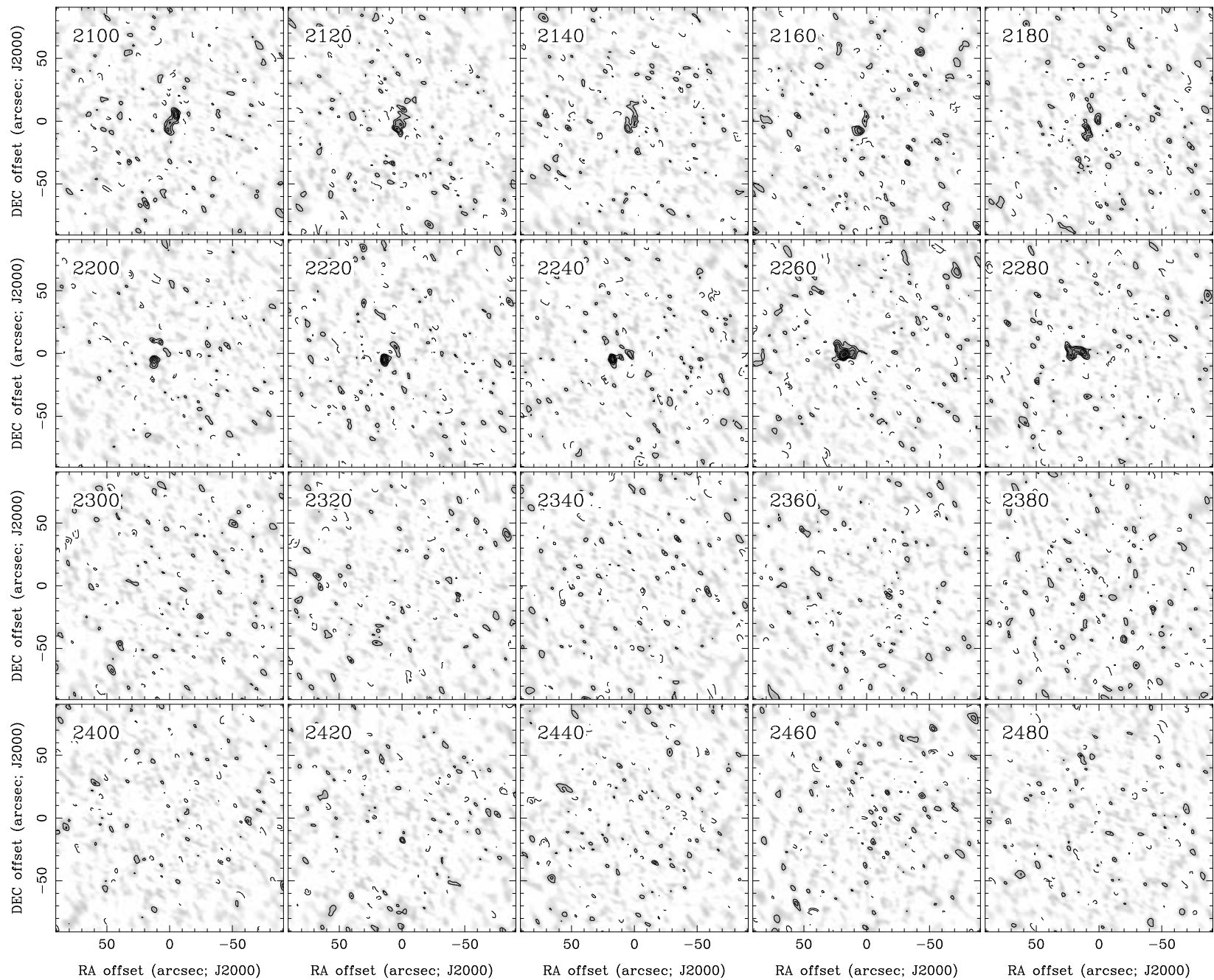
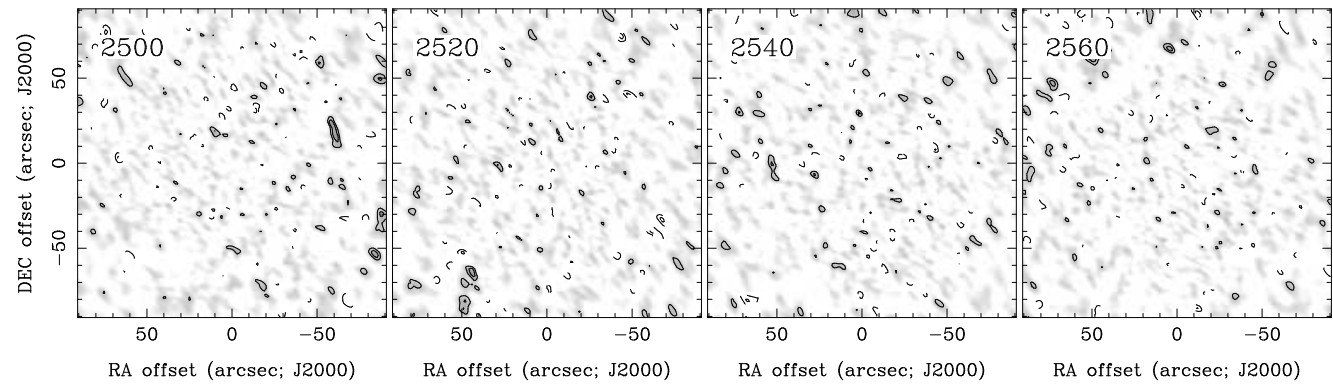


RA, DEC, VRAD = 09:32:06.200, +08:26:30.40, 1.70000E+03 km/s at pixel (132.00, 129.00, 1.00)
 Spatial region : 42,39 to 222,219 Spectral inc/bin : 1/1 =20/20 (km/s)
 Pixel map image: NGC2906.co.cmnorm (NGC2906) Min/max=-0.04729/0.06825 Range = 0 to 0.1073 JY/BEAM (lin)
 Contour image: NGC2906.co.cmnorm (NGC2906) Min/max=-0.04729/0.06825 Contours x 0.01122 JY/BEAM
 Contours : -14, -12, -10, -8, -6, -5, -4, -3, -2, 2, 3, 4, 5, 6, 8, 10, 12, 14



RA, DEC, VRAD = 09:32:06.200, +08:26:30.40, 1.70000E+03 km/s at pixel (132.00, 129.00, 1.00)
 Spatial region : 42,39 to 222,219 Spectral inc/bin : 1/1 =20/20 (km/s)
 Pixel map image: NGC2906.co.cmnorm (NGC2906) Min/max=-0.03975/0.03573 Range = 0 to 0.1073 JY/BEAM (lin)
 Contour image: NGC2906.co.cmnorm (NGC2906) Min/max=-0.03975/0.03573 Contours x 0.01122 JY/BEAM
 Contours : -14, -12, -10, -8, -6, -5, -4, -3, -2, 2, 3, 4, 5, 6, 8, 10, 12, 14



RA, DEC, VRAD = 09:32:06.200, +08:26:30.40, 1.70000E+03 km/s at pixel (132.00, 129.00, 1.00)
 Spatial region : 42,39 to 222,219 Spectral inc/bin : 1/1 =20/20 (km/s)
 Pixel map image: NGC2906.co.cmnorm (NGC2906) Min/max=-0.03742/0.0418 Range = 0 to 0.1073 JY/BEAM (lin)
 Contour image: NGC2906.co.cmnorm (NGC2906) Min/max=-0.03742/0.0418 Contours x 0.01122 JY/BEAM
 Contours : -14, -12, -10, -8, -6, -5, -4, -3, -2, 2, 3, 4, 5, 6, 8, 10, 12, 14