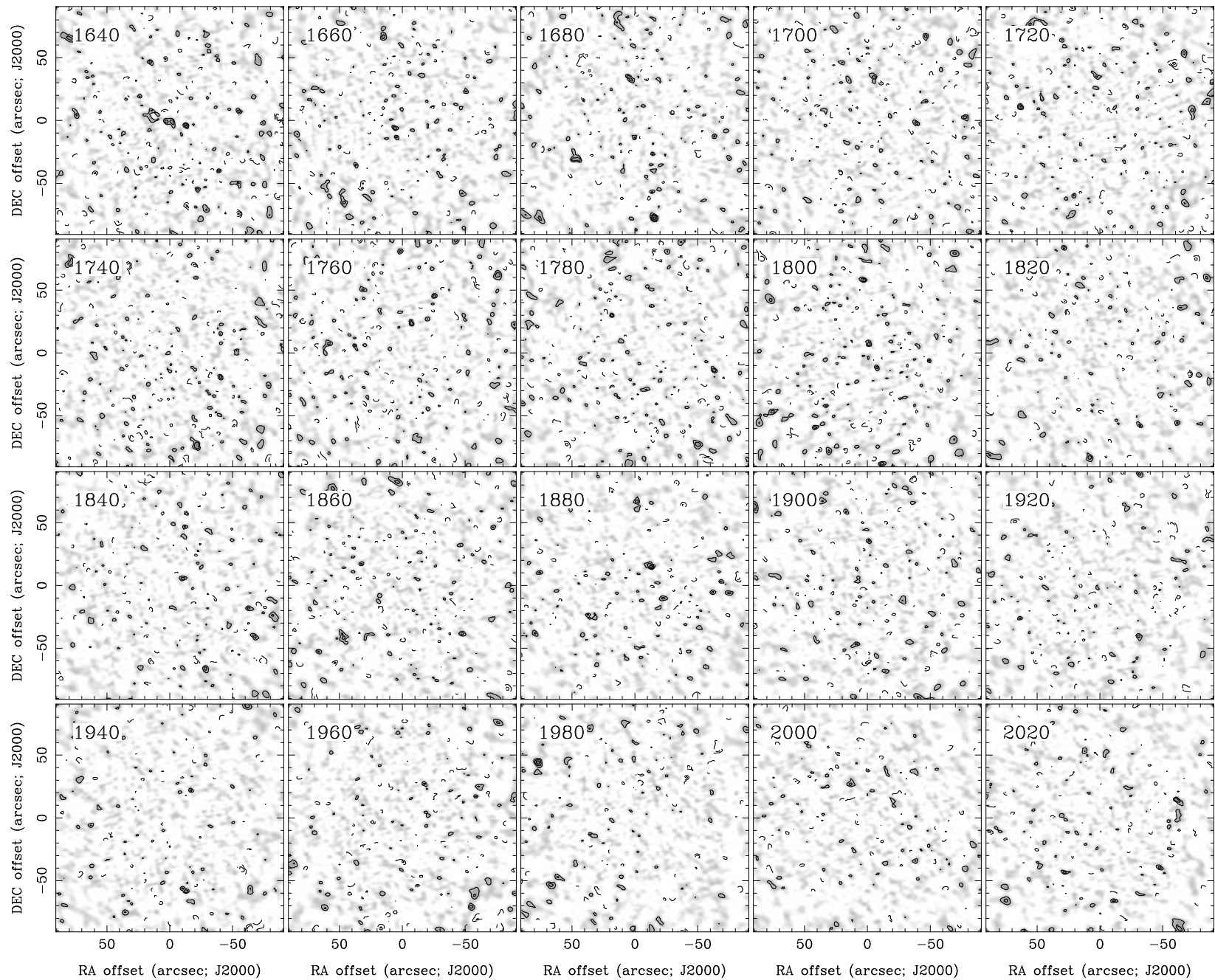


RA, DEC, VRAD = 10:48:24.800, +34:42:41.10, 1.24000E+03 km/s at pixel (132.00, 129.00, 1.00)  
 Spatial region : 42,39 to 222,219    Spectral inc/bin : 1/1 =20/20 (km/s)  
 Pixel map image: NGC3381.co.cmnorm (NGC3381) Min/max=-0.04346/0.08762    Range = 0 to 0.08762 JY/BEAM (lin)  
 Contour image: NGC3381.co.cmnorm (NGC3381) Min/max=-0.04346/0.08762    Contours x 0.01114 JY/BEAM  
 Contours : -14, -12, -10, -8, -6, -5, -4, -3, -2, 2, 3, 4, 5, 6, 8, 10, 12, 14



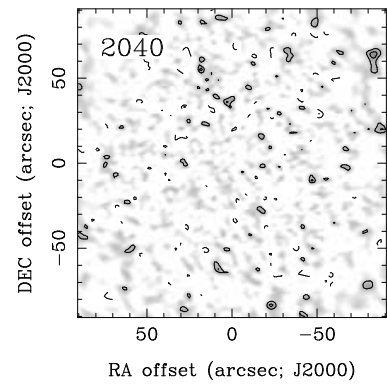
RA, DEC, VRAD = 10:48:24.800, +34:42:41.10, 1.24000E+03 km/s at pixel (132.00, 129.00, 1.00)

Spatial region : 42,39 to 222,219 Spectral inc/bin : 1/1 =20/20 (km/s)

Pixel map image: NGC3381.co.cmnorm (NGC3381) Min/max=-0.03848/0.04377 Range = 0 to 0.08762 JY/BEAM (lin)

Contour image: NGC3381.co.cmnorm (NGC3381) Min/max=-0.03848/0.04377 Contours x 0.01114 JY/BEAM

Contours : -14, -12, -10, -8, -6, -5, -4, -3, -2, 2, 3, 4, 5, 6, 8, 10, 12, 14



RA, DEC, VRAD = 10:48:24.800, +34:42:41.10, 1.24000E+03 km/s at pixel (132.00, 129.00, 1.00)  
Spatial region : 42,39 to 222,219 Spectral inc/bin : 1/1 =20/20 (km/s)  
Pixel map image: NGC3381.co.cmnorm (NGC3381) Min/max=-0.0347/0.03902 Range = 0 to 0.08762 JY/BEAM (lin)  
Contour image: NGC3381.co.cmnorm (NGC3381) Min/max=-0.0347/0.03902 Contours x 0.01114 JY/BEAM  
Contours : -14, -12, -10, -8, -6, -5, -4, -3, -2, 2, 3, 4, 5, 6, 8, 10, 12, 14