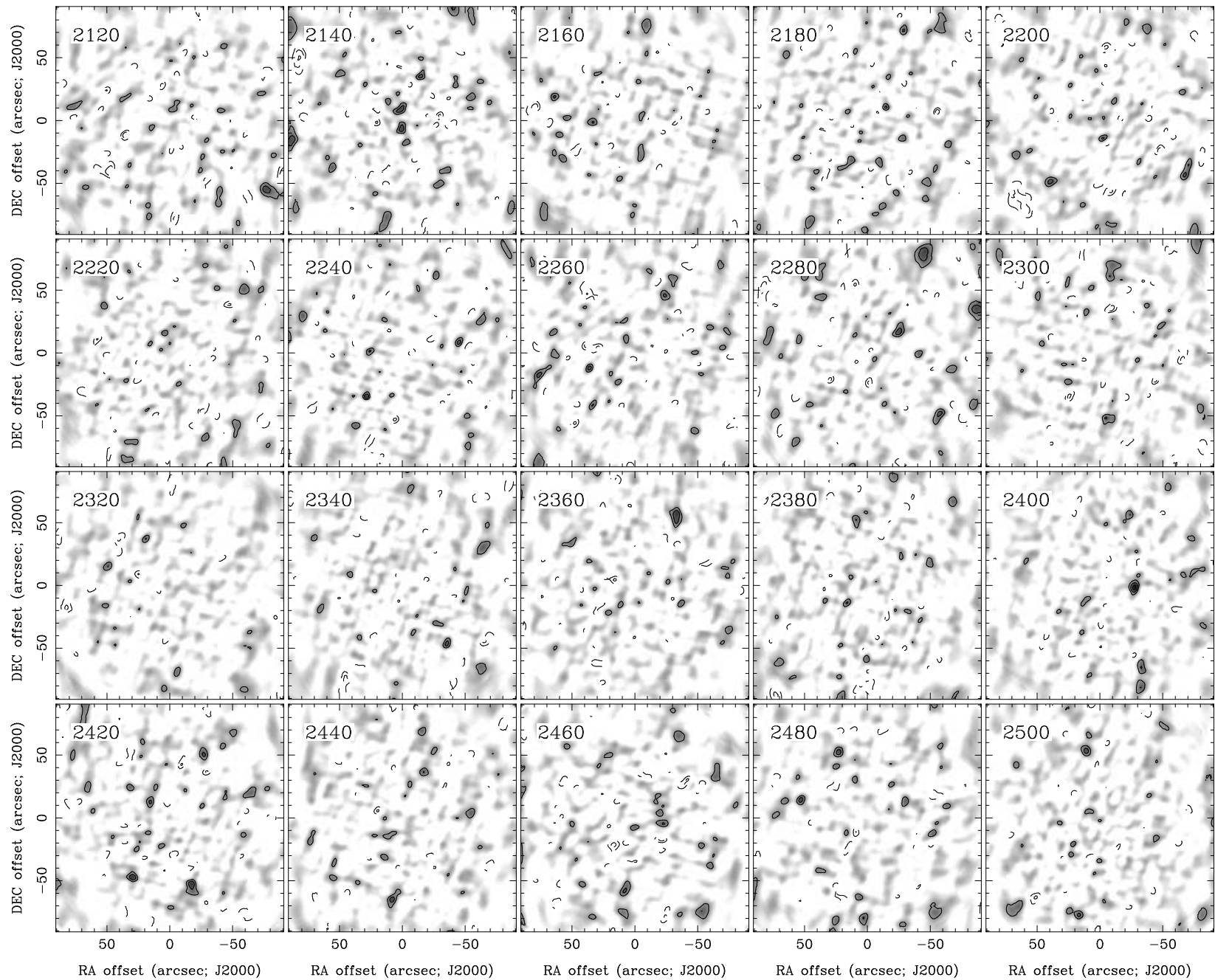
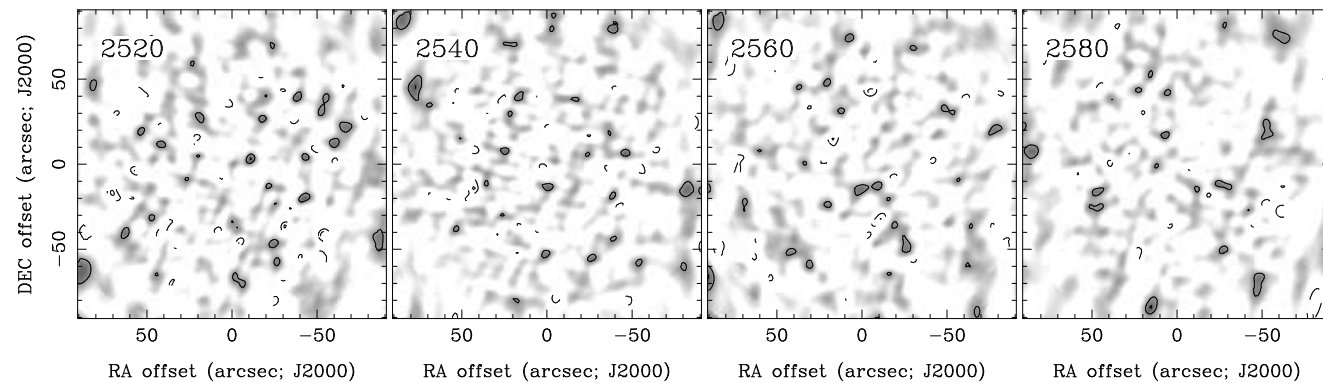


RA, DEC, VRAD = 15:58:32.300, +17:26:29.20, 1.72000E+03 km/s at pixel (132.00, 129.00, 1.00)
 Spatial region : 42,39 to 222,219 Spectral inc/bin : 1/1 =20/20 (km/s)
 Pixel map image: IC1151.co.cmnorm (IC1151) Min/max=-0.1209/0.1238 Range = 0 to 0.1662 JY/BEAM (lin)
 Contour image: IC1151.co.cmnorm (IC1151) Min/max=-0.1209/0.1238 Contours x 0.03421 JY/BEAM
 Contours : -14, -12, -10, -8, -6, -5, -4, -3, -2, 2, 3, 4, 5, 6, 8, 10, 12, 14



RA, DEC, VRAD = 15:58:32.300, +17:26:29.20, 1.72000E+03 km/s at pixel (132.00, 129.00, 1.00)
 Spatial region : 42,39 to 222,219 Spectral inc/bin : 1/1 =20/20 (km/s)
 Pixel map image: IC1151.co.cmnorm (IC1151) Min/max=-0.1076/0.118 Range = 0 to 0.1662 JY/BEAM (lin)
 Contour image: IC1151.co.cmnorm (IC1151) Min/max=-0.1076/0.118 Contours x 0.03421 JY/BEAM
 Contours : -14, -12, -10, -8, -6, -5, -4, -3, -2, 2, 3, 4, 5, 6, 8, 10, 12, 14



RA, DEC, VRAD = 15:58:32.300, +17:26:29.20, 1.72000E+03 km/s at pixel (132.00, 129.00, 1.00)
 Spatial region : 42,39 to 222,219 Spectral inc/bin : 1/1 =20/20 (km/s)
 Pixel map image: IC1151.co.cmnorm (IC1151) Min/max=-0.1016/0.1041 Range = 0 to 0.1662 JY/BEAM (lin)
 Contour image: IC1151.co.cmnorm (IC1151) Min/max=-0.1016/0.1041 Contours x 0.03421 JY/BEAM
 Contours : -14, -12, -10, -8, -6, -5, -4, -3, -2, 2, 3, 4, 5, 6, 8, 10, 12, 14