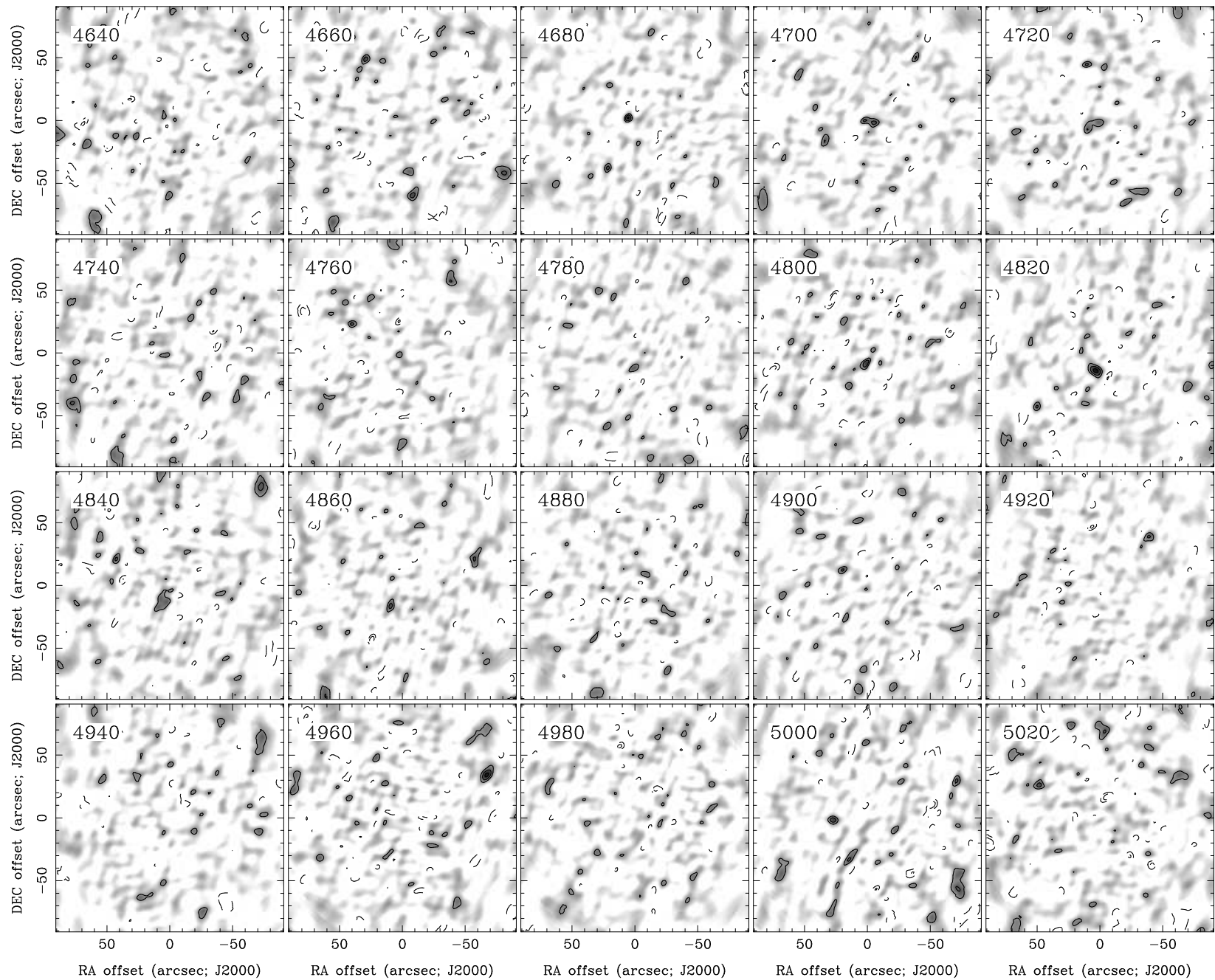
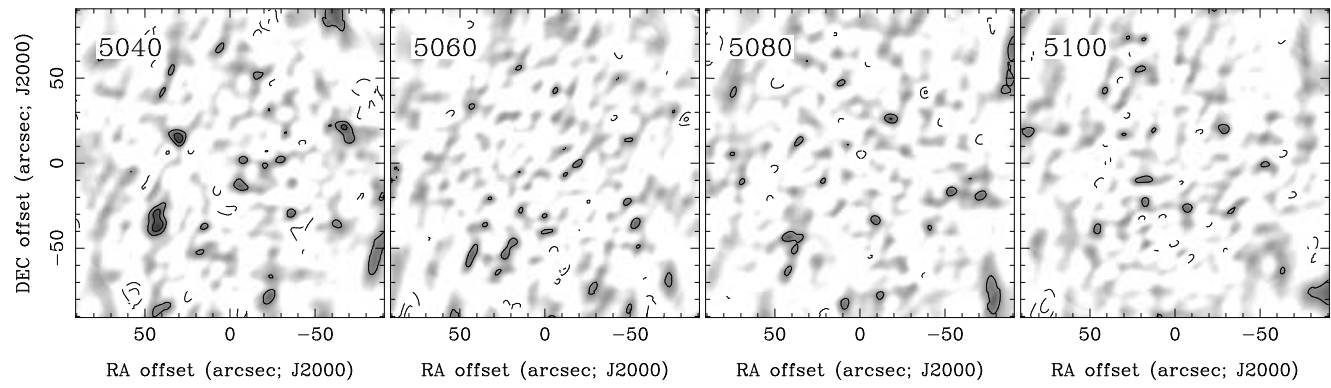


RA, DEC, VRAD = 16:10:34.300, +10:02:25.30, 4.24000E+03 km/s at pixel (133.00, 130.00, 1.00)
 Spatial region : 43,40 to 223,220 Spectral inc/bin : 1/1 =20/20 (km/s)
 Pixel map image: IC1199.co.cmnorm (IC1199) Min/max=-0.08247/0.1001 Range = 0 to 0.1119 JY/BEAM (lin)
 Contour image: IC1199.co.cmnorm (IC1199) Min/max=-0.08247/0.1001 Contours x 0.0239 JY/BEAM
 Contours : -14, -12, -10, -8, -6, -5, -4, -3, -2, 2, 3, 4, 5, 6, 8, 10, 12, 14



RA, DEC, VRAD = 16:10:34.300, +10:02:25.30, 4.24000E+03 km/s at pixel (133.00, 130.00, 1.00)
 Spatial region : 43,40 to 223,220 Spectral inc/bin : 1/1 =20/20 (km/s)
 Pixel map image: IC1199.co.cmnorm (IC1199) Min/max=-0.091/0.08118 Range = 0 to 0.1119 JY/BEAM (lin)
 Contour image: IC1199.co.cmnorm (IC1199) Min/max=-0.091/0.08118 Contours x 0.0239 JY/BEAM
 Contours : -14, -12, -10, -8, -6, -5, -4, -3, -2, 2, 3, 4, 5, 6, 8, 10, 12, 14



RA, DEC, VRAD = 16:10:34.300, +10:02:25.30, 4.24000E+03 km/s at pixel (133.00, 130.00, 1.00)
 Spatial region : 43,40 to 223,220 Spectral inc/bin : 1/1 =20/20 (km/s)
 Pixel map image: IC1199.co.cmnorm (IC1199) Min/max=-0.07883/0.06762 Range = 0 to 0.1119 JY/BEAM (lin)
 Contour image: IC1199.co.cmnorm (IC1199) Min/max=-0.07883/0.06762 Contours x 0.0239 JY/BEAM
 Contours : -14, -12, -10, -8, -6, -5, -4, -3, -2, 2, 3, 4, 5, 6, 8, 10, 12, 14