

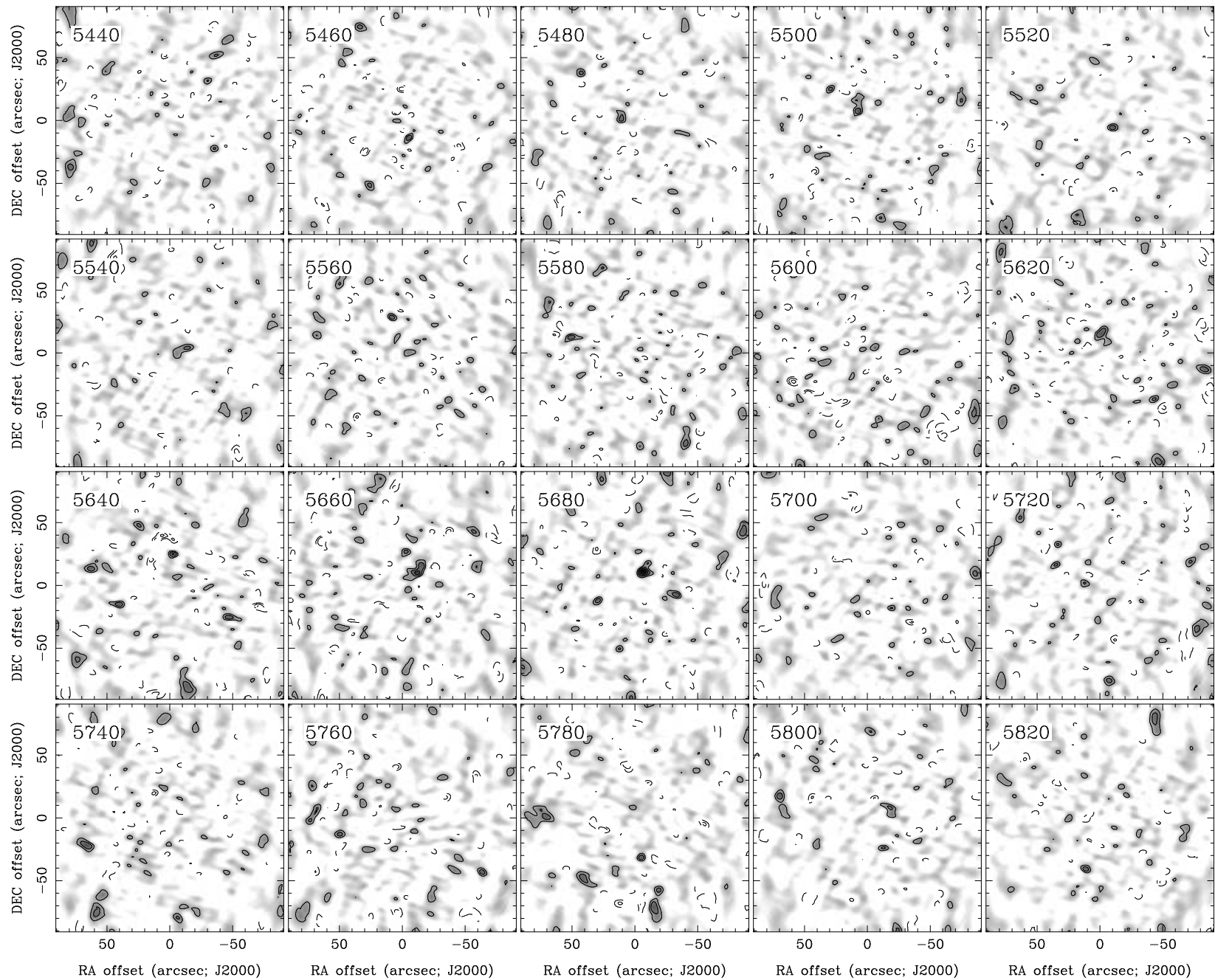
RA, DEC, VRAD = 15:36:42.200, +43:32:21.50, 5.04000E+03 km/s at pixel (134.00, 130.00, 1.00)

Spatial region : 44,40 to 224,220 Spectral inc/bin : 1/1 =20/20 (km/s)

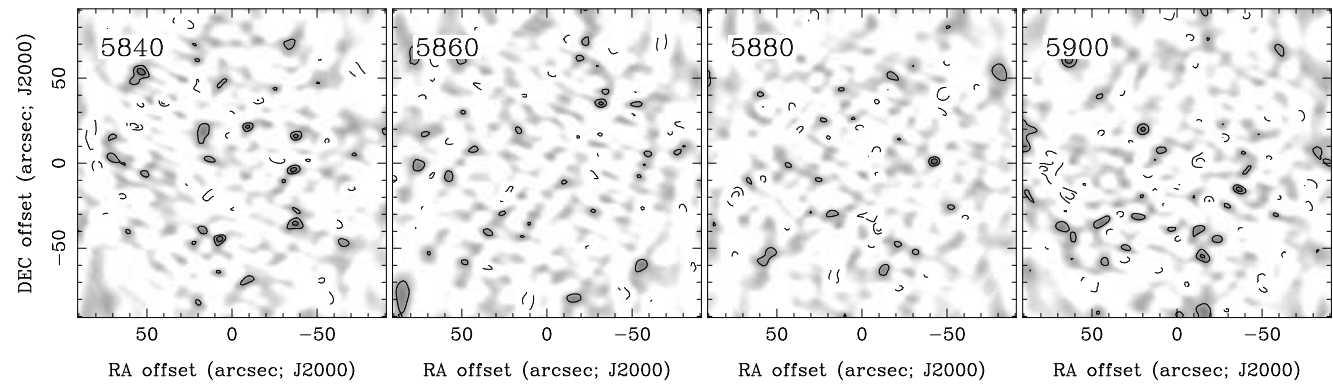
Pixel map image: IC4566.co.cmnorm (IC4566) Min/max=-0.07006/0.0636 Range = 0 to 0.1113 JY/BEAM (lin)

Contour image: IC4566.co.cmnorm (IC4566) Min/max=-0.07006/0.0636 Contours x 0.01901 JY/BEAM

Contours : -14, -12, -10, -8, -6, -5, -4, -3, -2, 2, 3, 4, 5, 6, 8, 10, 12, 14



RA, DEC, VRAD = 15:36:42.200, +43:32:21.50, 5.04000E+03 km/s at pixel (134.00, 130.00, 1.00)
 Spatial region : 44,40 to 224,220 Spectral inc/bin : 1/1 =20/20 (km/s)
 Pixel map image: IC4566.co.cmnorm (IC4566) Min/max=-0.06509/0.07015 Range = 0 to 0.1113 JY/BEAM (lin)
 Contour image: IC4566.co.cmnorm (IC4566) Min/max=-0.06509/0.07015 Contours x 0.01901 JY/BEAM
 Contours : -14, -12, -10, -8, -6, -5, -4, -3, -2, 2, 3, 4, 5, 6, 8, 10, 12, 14



RA, DEC, VRAD = 15:36:42.200, +43:32:21.50, 5.04000E+03 km/s at pixel (134.00, 130.00, 1.00)
 Spatial region : 44,40 to 224,220 Spectral inc/bin : 1/1 =20/20 (km/s)
 Pixel map image: IC4566.co.cmnorm (IC4566) Min/max=-0.06861/0.06474 Range = 0 to 0.1113 JY/BEAM (lin)
 Contour image: IC4566.co.cmnorm (IC4566) Min/max=-0.06861/0.06474 Contours x 0.01901 JY/BEAM
 Contours : -14, -12, -10, -8, -6, -5, -4, -3, -2, 2, 3, 4, 5, 6, 8, 10, 12, 14