

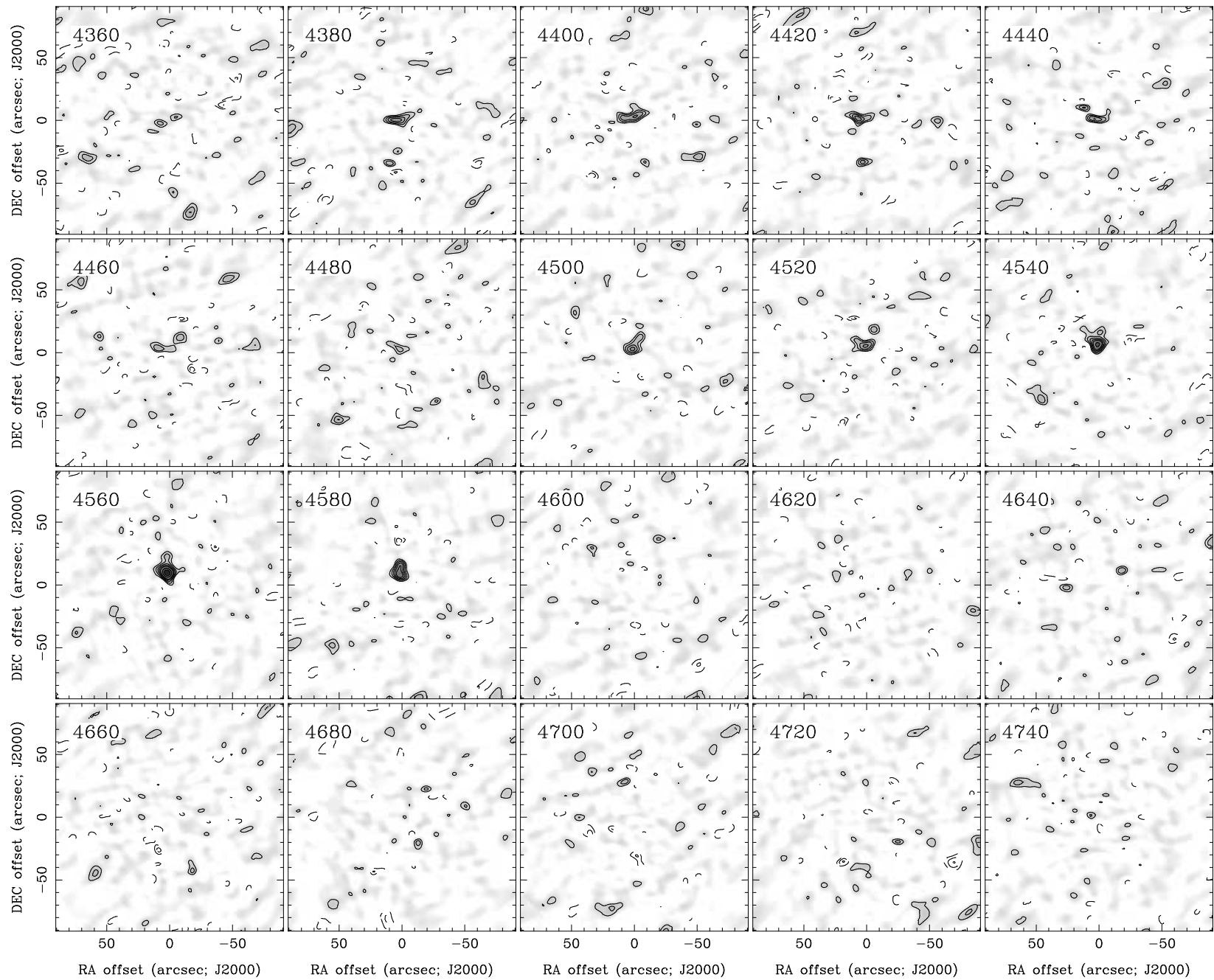
RA, DEC, VRAD = 07:16:04.100, +64:42:40.80, 3.96000E+03 km/s at pixel (133.00, 130.00, 1.00)

Spatial region : 43,40 to 223,220 Spectral inc/bin : 1/1 =20/20 (km/s)

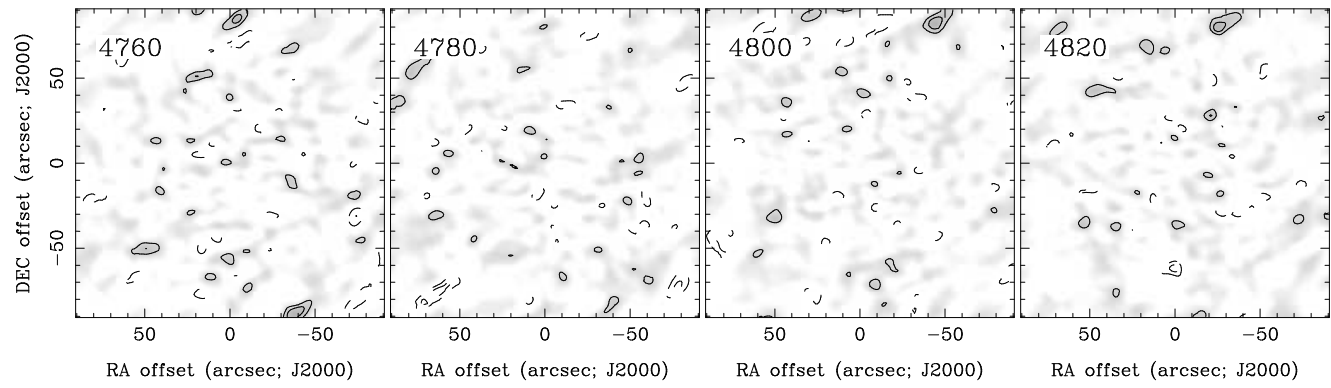
Pixel map image: NGC2347.co.cmnorm (NGC2347) Min/max=-0.04581/0.07041 Range = 0 to 0.1688 JY/BEAM (lin)

Contour image: NGC2347.co.cmnorm (NGC2347) Min/max=-0.04581/0.07041 Contours x 0.01295 JY/BEAM

Contours : -14, -12, -10, -8, -6, -5, -4, -3, -2, 2, 3, 4, 5, 6, 8, 10, 12, 14



RA, DEC, VRAD = 07:16:04.100, +64:42:40.80, 3.96000E+03 km/s at pixel (133.00, 130.00, 1.00)
 Spatial region : 43,40 to 223,220 Spectral inc/bin : 1/1 =20/20 (km/s)
 Pixel map image: NGC2347.co.cmnorm (NGC2347) Min/max=-0.03643/0.04526 Range = 0 to 0.1688 JY/BEAM (lin)
 Contour image: NGC2347.co.cmnorm (NGC2347) Min/max=-0.03643/0.04526 Contours x 0.01295 JY/BEAM
 Contours : -14, -12, -10, -8, -6, -5, -4, -3, -2, 2, 3, 4, 5, 6, 8, 10, 12, 14



RA, DEC, VRAD = 07:16:04.100, +64:42:40.80, 3.96000E+03 km/s at pixel (133.00, 130.00, 1.00)
 Spatial region : 43,40 to 223,220 Spectral inc/bin : 1/1 =20/20 (km/s)
 Pixel map image: NGC2347.co.cmnorm (NGC2347) Min/max=-0.04494/0.04724 Range = 0 to 0.1688 JY/BEAM (lin)
 Contour image: NGC2347.co.cmnorm (NGC2347) Min/max=-0.04494/0.04724 Contours x 0.01295 JY/BEAM
 Contours : -14, -12, -10, -8, -6, -5, -4, -3, -2, 2, 3, 4, 5, 6, 8, 10, 12, 14