

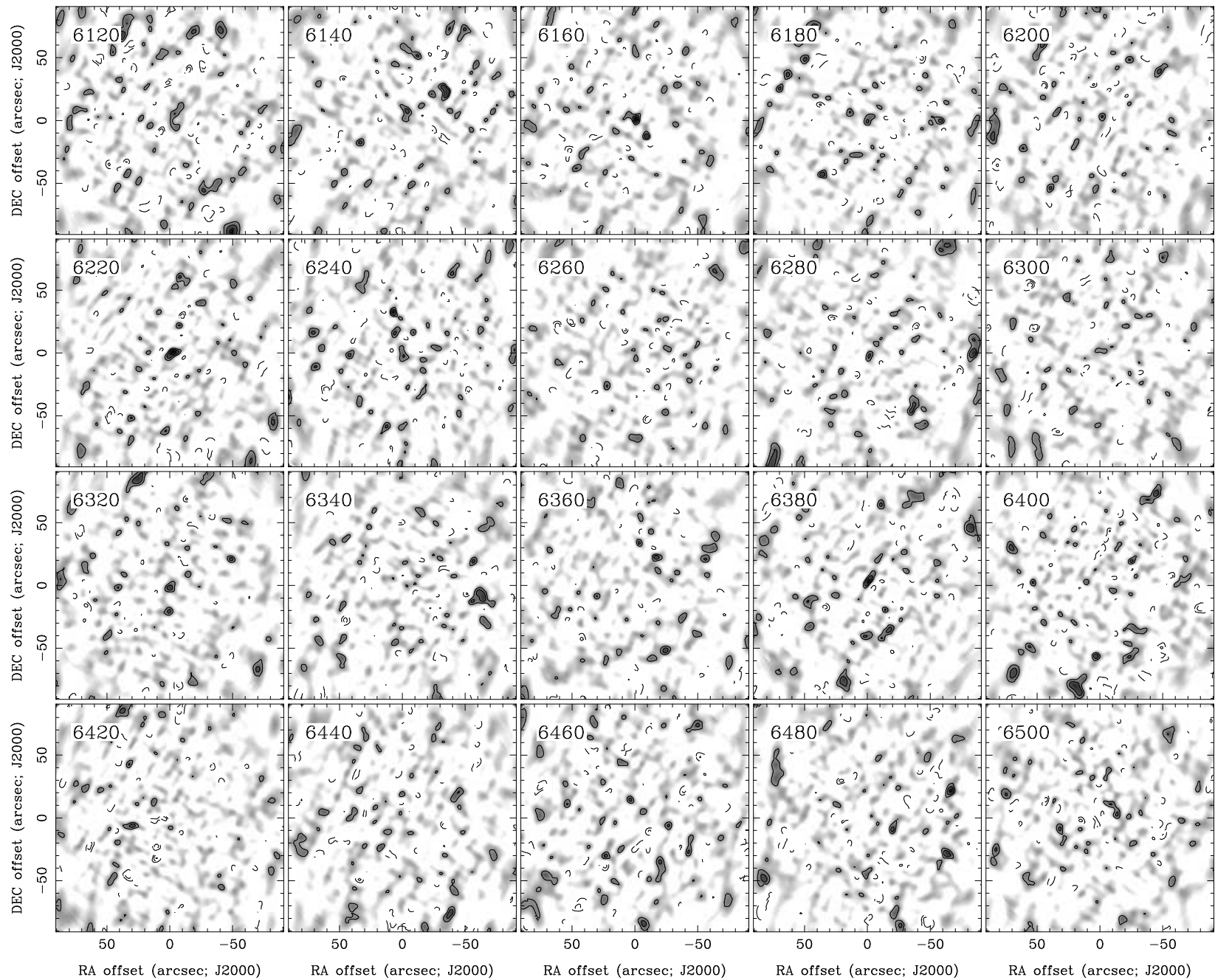
RA, DEC, VRAD = 10:37:00.100, +18:08:09.20, 5.72000E+03 km/s at pixel (134.00, 130.00, 1.00)

Spatial region : 44,40 to 224,220 Spectral inc/bin : 1/1 =20/20 (km/s)

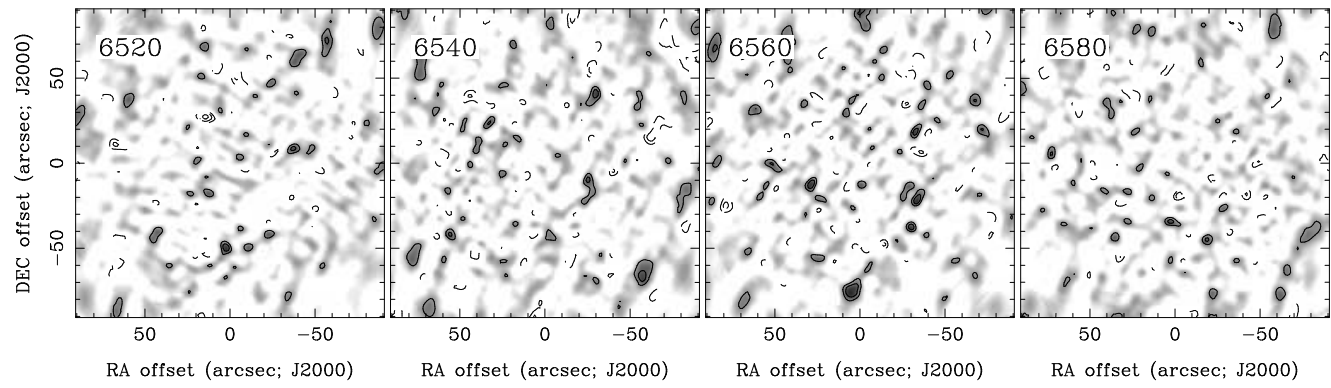
Pixel map image: NGC3303.co.cmnorm (NGC3303) Min/max=-0.08027/0.07702 Range = 0 to 0.08222 JY/BEAM (lin)

Contour image: NGC3303.co.cmnorm (NGC3303) Min/max=-0.08027/0.07702 Contours x 0.01755 JY/BEAM

Contours : -14, -12, -10, -8, -6, -5, -4, -3, -2, 2, 3, 4, 5, 6, 8, 10, 12, 14



RA, DEC, VRAD = 10:37:00.100, +18:08:09.20, 5.72000E+03 km/s at pixel (134.00, 130.00, 1.00)
 Spatial region : 44,40 to 224,220 Spectral inc/bin : 1/1 =20/20 (km/s)
 Pixel map image: NGC3303.co.cmnorm (NGC3303) Min/max=-0.05969/0.05725 Range = 0 to 0.08222 JY/BEAM (lin)
 Contour image: NGC3303.co.cmnorm (NGC3303) Min/max=-0.05969/0.05725 Contours x 0.01755 JY/BEAM
 Contours : -14, -12, -10, -8, -6, -5, -4, -3, -2, 2, 3, 4, 5, 6, 8, 10, 12, 14



RA, DEC, VRAD = 10:37:00.100, +18:08:09.20, 5.72000E+03 km/s at pixel (134.00, 130.00, 1.00)
 Spatial region : 44,40 to 224,220 Spectral inc/bin : 1/1 =20/20 (km/s)
 Pixel map image: NGC3303.co.cmnorm (NGC3303) Min/max=-0.06359/0.05936 Range = 0 to 0.08222 JY/BEAM (lin)
 Contour image: NGC3303.co.cmnorm (NGC3303) Min/max=-0.06359/0.05936 Contours x 0.01755 JY/BEAM
 Contours : -14, -12, -10, -8, -6, -5, -4, -3, -2, 2, 3, 4, 5, 6, 8, 10, 12, 14