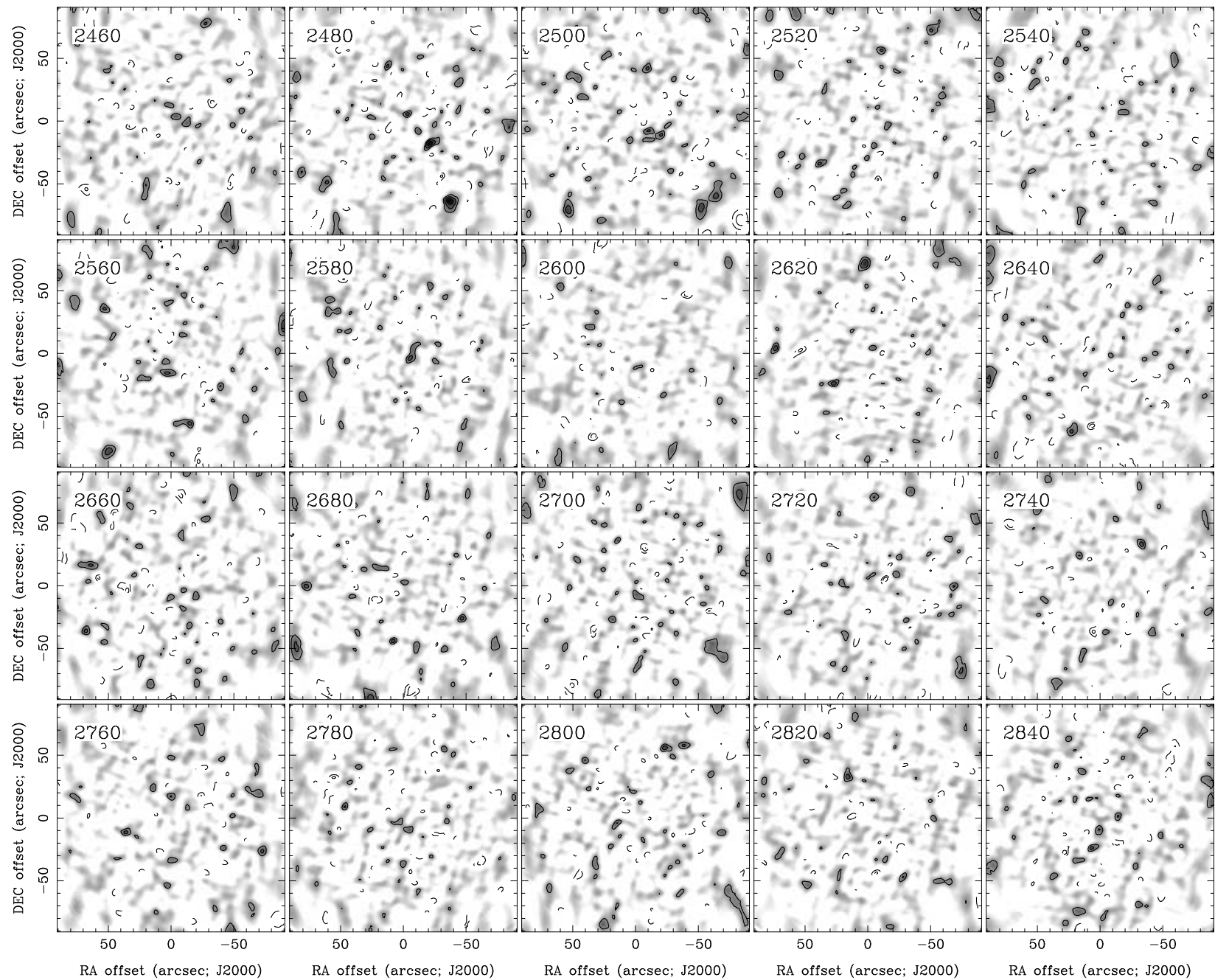
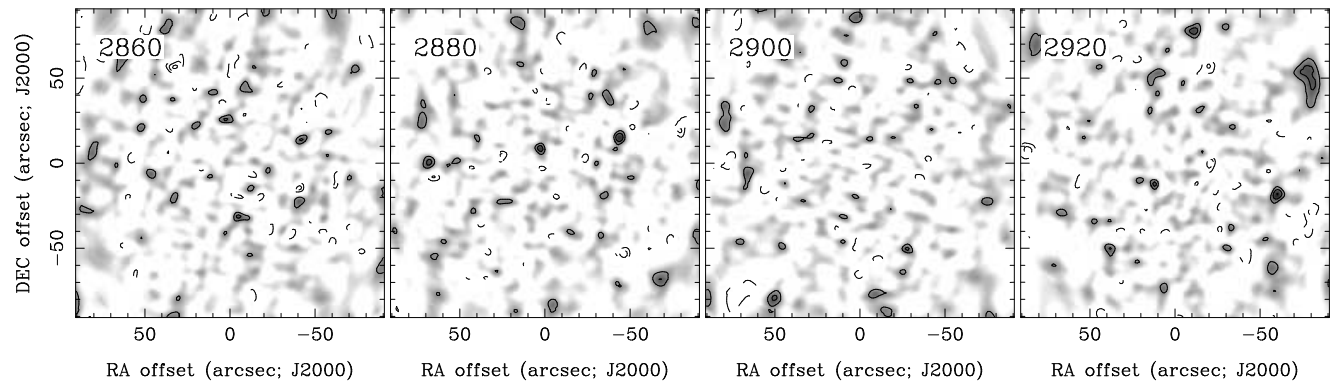


RA, DEC, VRAD = 11:28:00.600, +29:30:39.80, 2.06000E+03 km/s at pixel (132.00, 129.00, 1.00)
 Spatial region : 42,39 to 222,219 Spectral inc/bin : 1/1 =20/20 (km/s)
 Pixel map image: NGC3687.co.cmnorm (NGC3687) Min/max=-0.08165/0.07684 Range = 0 to 0.1114 JY/BEAM (lin)
 Contour image: NGC3687.co.cmnorm (NGC3687) Min/max=-0.08165/0.07684 Contours x 0.02363 JY/BEAM
 Contours : -14, -12, -10, -8, -6, -5, -4, -3, -2, 2, 3, 4, 5, 6, 8, 10, 12, 14



RA, DEC, VRAD = 11:28:00.600, +29:30:39.80, 2.06000E+03 km/s at pixel (132.00, 129.00, 1.00)
 Spatial region : 42,39 to 222,219 Spectral inc/bin : 1/1 =20/20 (km/s)
 Pixel map image: NGC3687.co.cmnorm (NGC3687) Min/max=-0.08341/0.07777 Range = 0 to 0.1114 JY/BEAM (lin)
 Contour image: NGC3687.co.cmnorm (NGC3687) Min/max=-0.08341/0.07777 Contours x 0.02363 JY/BEAM
 Contours : -14, -12, -10, -8, -6, -5, -4, -3, -2, 2, 3, 4, 5, 6, 8, 10, 12, 14



RA, DEC, VRAD = 11:28:00.600, +29:30:39.80, 2.06000E+03 km/s at pixel (132.00, 129.00, 1.00)
 Spatial region : 42,39 to 222,219 Spectral inc/bin : 1/1 =20/20 (km/s)
 Pixel map image: NGC3687.co.cmnorm (NGC3687) Min/max=-0.08623/0.09618 Range = 0 to 0.1114 JY/BEAM (lin)
 Contour image: NGC3687.co.cmnorm (NGC3687) Min/max=-0.08623/0.09618 Contours x 0.02363 JY/BEAM
 Contours : -14, -12, -10, -8, -6, -5, -4, -3, -2, 2, 3, 4, 5, 6, 8, 10, 12, 14