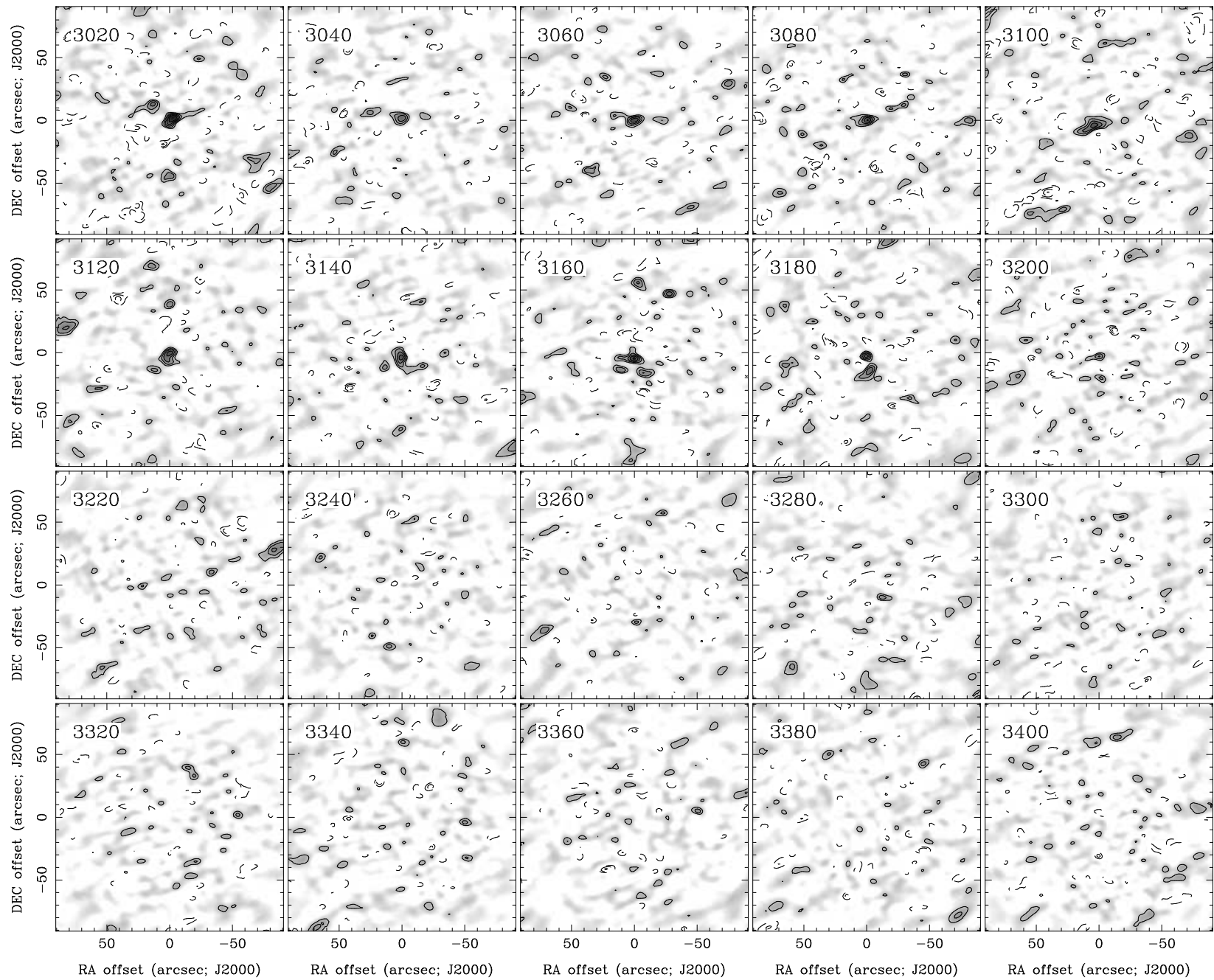
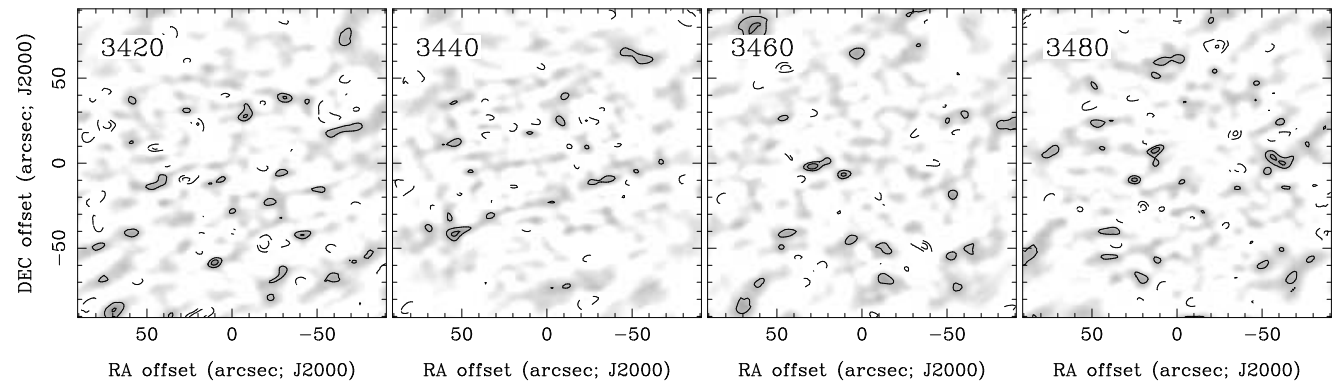


RA, DEC, VRAD = 11:41:16.600, +47:41:26.90, 2.62000E+03 km/s at pixel (133.00, 129.00, 1.00)
 Spatial region : 43,39 to 223,219 Spectral inc/bin : 1/1 =20/20 (km/s)
 Pixel map image: NGC3811.co.cmnorm (NGC3811) Min/max=-0.09085/0.1187 Range = 0 to 0.1703 JY/BEAM (lin)
 Contour image: NGC3811.co.cmnorm (NGC3811) Min/max=-0.09085/0.1187 Contours x 0.02101 JY/BEAM
 Contours : -14, -12, -10, -8, -6, -5, -4, -3, -2, 2, 3, 4, 5, 6, 8, 10, 12, 14



RA, DEC, VRAD = 11:41:16.600, +47:41:26.90, 2.62000E+03 km/s at pixel (133.00, 129.00, 1.00)
 Spatial region : 43,39 to 223,219 Spectral inc/bin : 1/1 =20/20 (km/s)
 Pixel map image: NGC3811.co.cmnorm (NGC3811) Min/max=-0.06978/0.07449 Range = 0 to 0.1703 JY/BEAM (lin)
 Contour image: NGC3811.co.cmnorm (NGC3811) Min/max=-0.06978/0.07449 Contours x 0.02101 JY/BEAM
 Contours : -14, -12, -10, -8, -6, -5, -4, -3, -2, 2, 3, 4, 5, 6, 8, 10, 12, 14



RA, DEC, VRAD = 11:41:16.600, +47:41:26.90, 2.62000E+03 km/s at pixel (133.00, 129.00, 1.00)
 Spatial region : 43,39 to 223,219 Spectral inc/bin : 1/1 =20/20 (km/s)
 Pixel map image: NGC3811.co.cmnorm (NGC3811) Min/max=-0.08576/0.07226 Range = 0 to 0.1703 JY/BEAM (lin)
 Contour image: NGC3811.co.cmnorm (NGC3811) Min/max=-0.08576/0.07226 Contours x 0.02101 JY/BEAM
 Contours : -14, -12, -10, -8, -6, -5, -4, -3, -2, 2, 3, 4, 5, 6, 8, 10, 12, 14