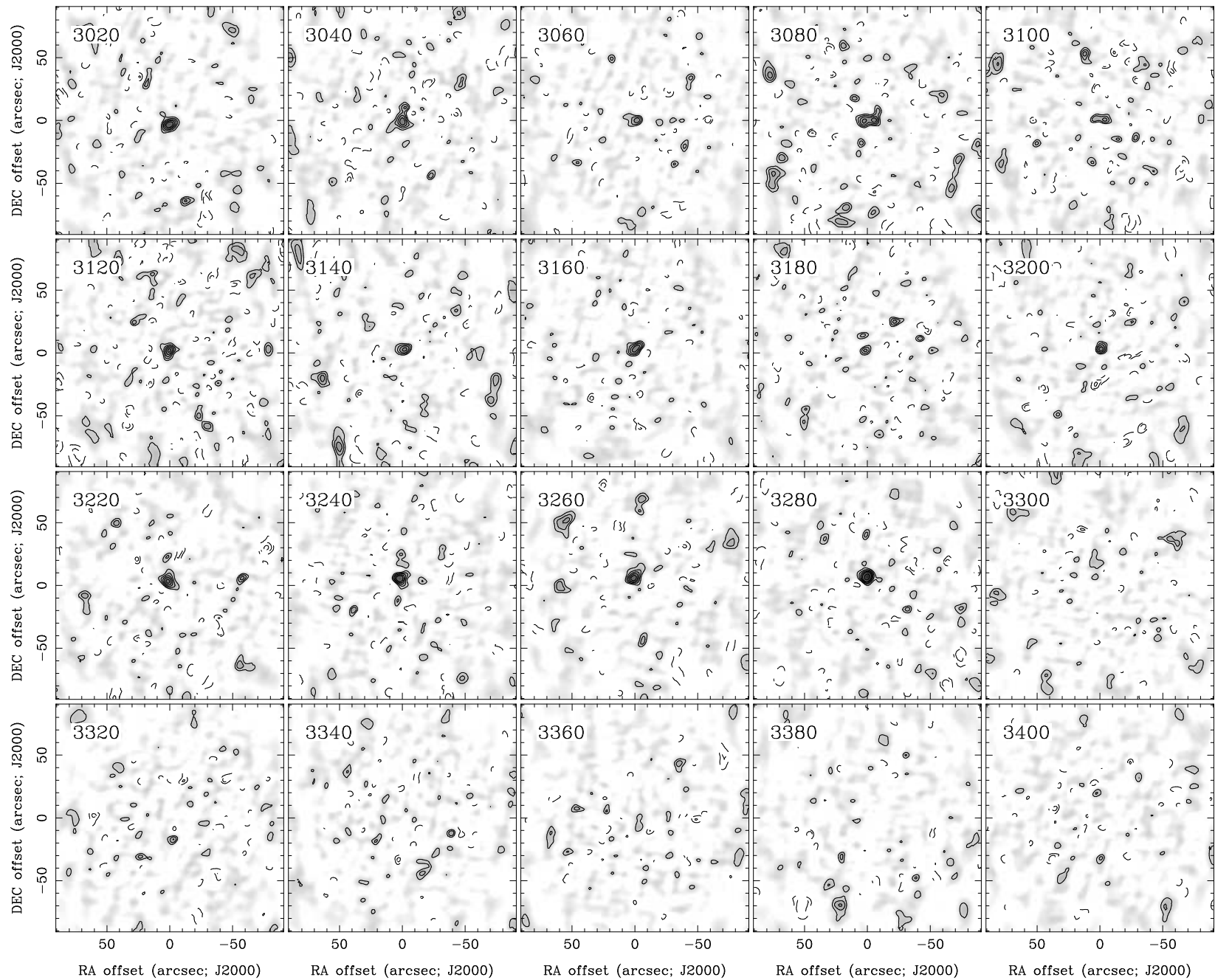
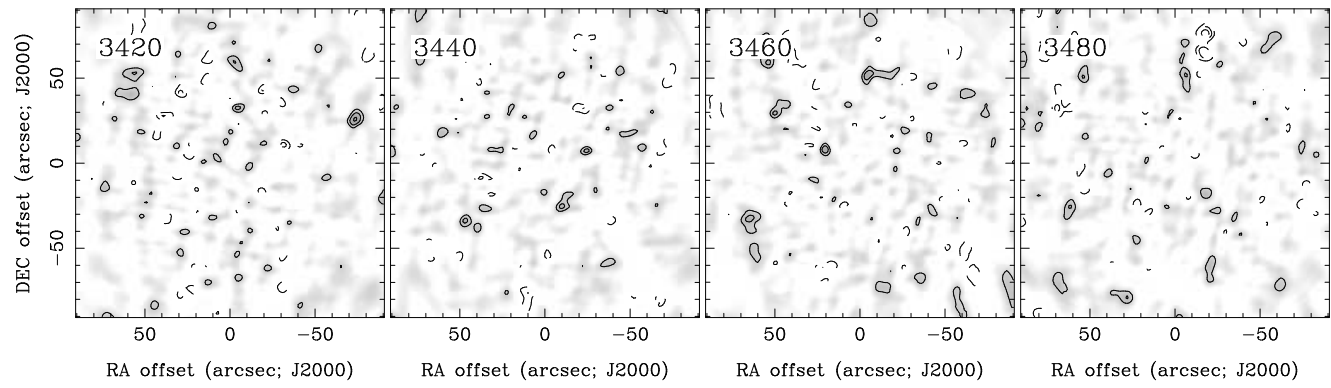


RA, DEC, VRAD = 11:57:36.900, +32:16:39.40, 2.62000E+03 km/s at pixel (133.00, 129.00, 1.00)
 Spatial region : 43,39 to 223,219 Spectral inc/bin : 1/1 =20/20 (km/s)
 Pixel map image: NGC3994.co.cmnorm (NGC3994) Min/max=-0.06276/0.1273 Range = 0 to 0.2039 JY/BEAM (lin)
 Contour image: NGC3994.co.cmnorm (NGC3994) Min/max=-0.06276/0.1273 Contours x 0.018 JY/BEAM
 Contours : -14, -12, -10, -8, -6, -5, -4, -3, -2, 2, 3, 4, 5, 6, 8, 10, 12, 14



RA, DEC, VRAD = 11:57:36.900, +32:16:39.40, 2.62000E+03 km/s at pixel (133.00, 129.00, 1.00)
 Spatial region : 43,39 to 223,219 Spectral inc/bin : 1/1 =20/20 (km/s)
 Pixel map image: NGC3994.co.cmnorm (NGC3994) Min/max=-0.06718/0.06027 Range = 0 to 0.2039 JY/BEAM (lin)
 Contour image: NGC3994.co.cmnorm (NGC3994) Min/max=-0.06718/0.06027 Contours x 0.018 JY/BEAM
 Contours : -14, -12, -10, -8, -6, -5, -4, -3, -2, 2, 3, 4, 5, 6, 8, 10, 12, 14



RA, DEC, VRAD = 11:57:36.900, +32:16:39.40, 2.62000E+03 km/s at pixel (133.00, 129.00, 1.00)
 Spatial region : 43,39 to 223,219 Spectral inc/bin : 1/1 =20/20 (km/s)
 Pixel map image: NGC3994.co.cmnorm (NGC3994) Min/max=-0.08386/0.05602 Range = 0 to 0.2039 JY/BEAM (lin)
 Contour image: NGC3994.co.cmnorm (NGC3994) Min/max=-0.08386/0.05602 Contours x 0.018 JY/BEAM
 Contours : -14, -12, -10, -8, -6, -5, -4, -3, -2, 2, 3, 4, 5, 6, 8, 10, 12, 14