

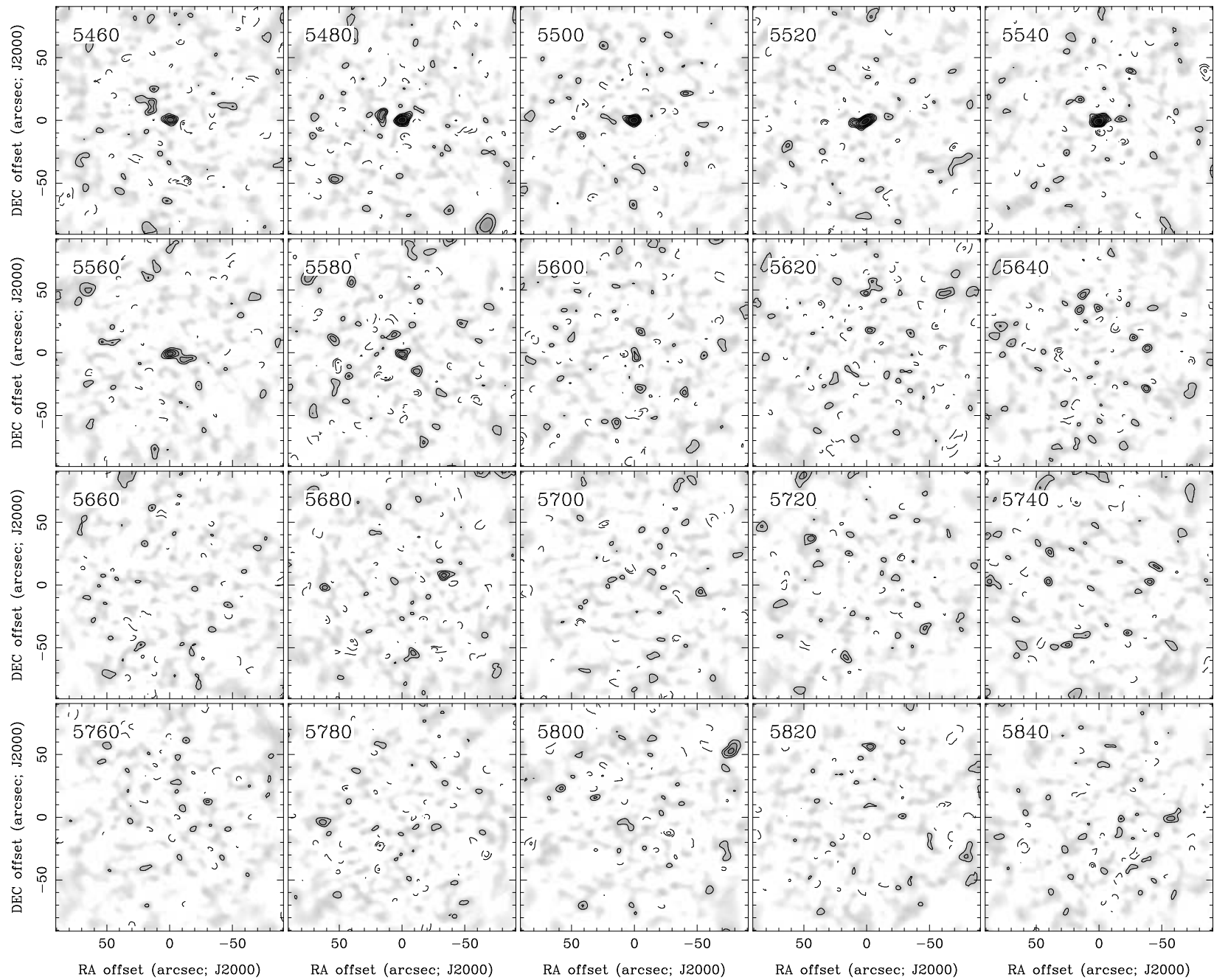
RA, DEC, VRAD = 13:09:47.500, +28:54:25.00, 5.06000E+03 km/s at pixel (134.00, 130.00, 1.00)

Spatial region : 44,40 to 224,220 Spectral inc/bin : 1/1 =20/20 (km/s)

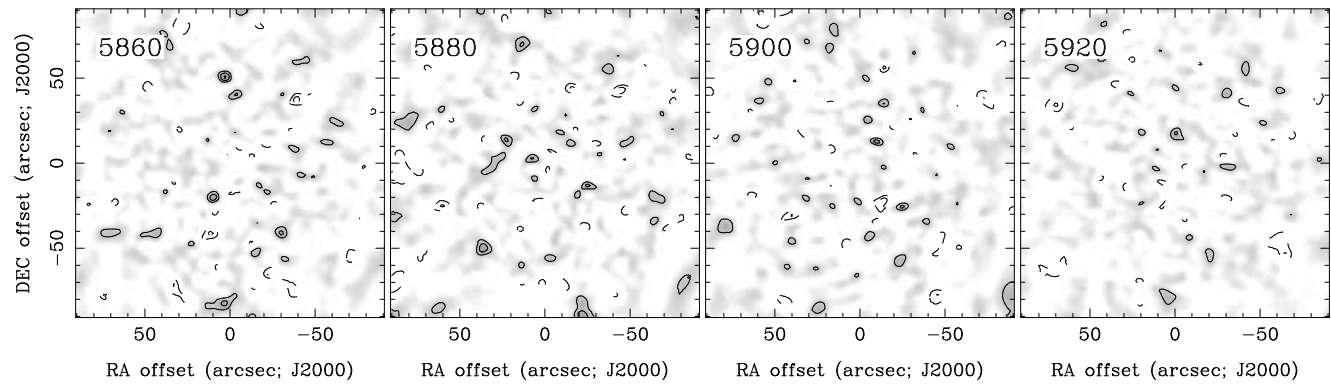
Pixel map image: NGC5000.co.cmnorm (NGC5000) Min/max=-0.07401/0.1142 Range = 0 to 0.1896 JY/BEAM (lin)

Contour image: NGC5000.co.cmnorm (NGC5000) Min/max=-0.07401/0.1142 Contours x 0.01933 JY/BEAM

Contours : -14, -12, -10, -8, -6, -5, -4, -3, -2, 2, 3, 4, 5, 6, 8, 10, 12, 14



RA, DEC, VRAD = 13:09:47.500, +28:54:25.00, 5.06000E+03 km/s at pixel (134.00, 130.00, 1.00)
 Spatial region : 44,40 to 224,220 Spectral inc/bin : 1/1 =20/20 (km/s)
 Pixel map image: NGC5000.co.cmnorm (NGC5000) Min/max=-0.0709/0.06934 Range = 0 to 0.1896 JY/BEAM (lin)
 Contour image: NGC5000.co.cmnorm (NGC5000) Min/max=-0.0709/0.06934 Contours x 0.01933 JY/BEAM
 Contours : -14, -12, -10, -8, -6, -5, -4, -3, -2, 2, 3, 4, 5, 6, 8, 10, 12, 14



RA, DEC, VRAD = 13:09:47.500, +28:54:25.00, 5.06000E+03 km/s at pixel (134.00, 130.00, 1.00)
 Spatial region : 44,40 to 224,220 Spectral inc/bin : 1/1 =20/20 (km/s)
 Pixel map image: NGC5000.co.cmnorm (NGC5000) Min/max=-0.05966/0.06052 Range = 0 to 0.1896 JY/BEAM (lin)
 Contour image: NGC5000.co.cmnorm (NGC5000) Min/max=-0.05966/0.06052 Contours x 0.01933 JY/BEAM
 Contours : -14, -12, -10, -8, -6, -5, -4, -3, -2, 2, 3, 4, 5, 6, 8, 10, 12, 14