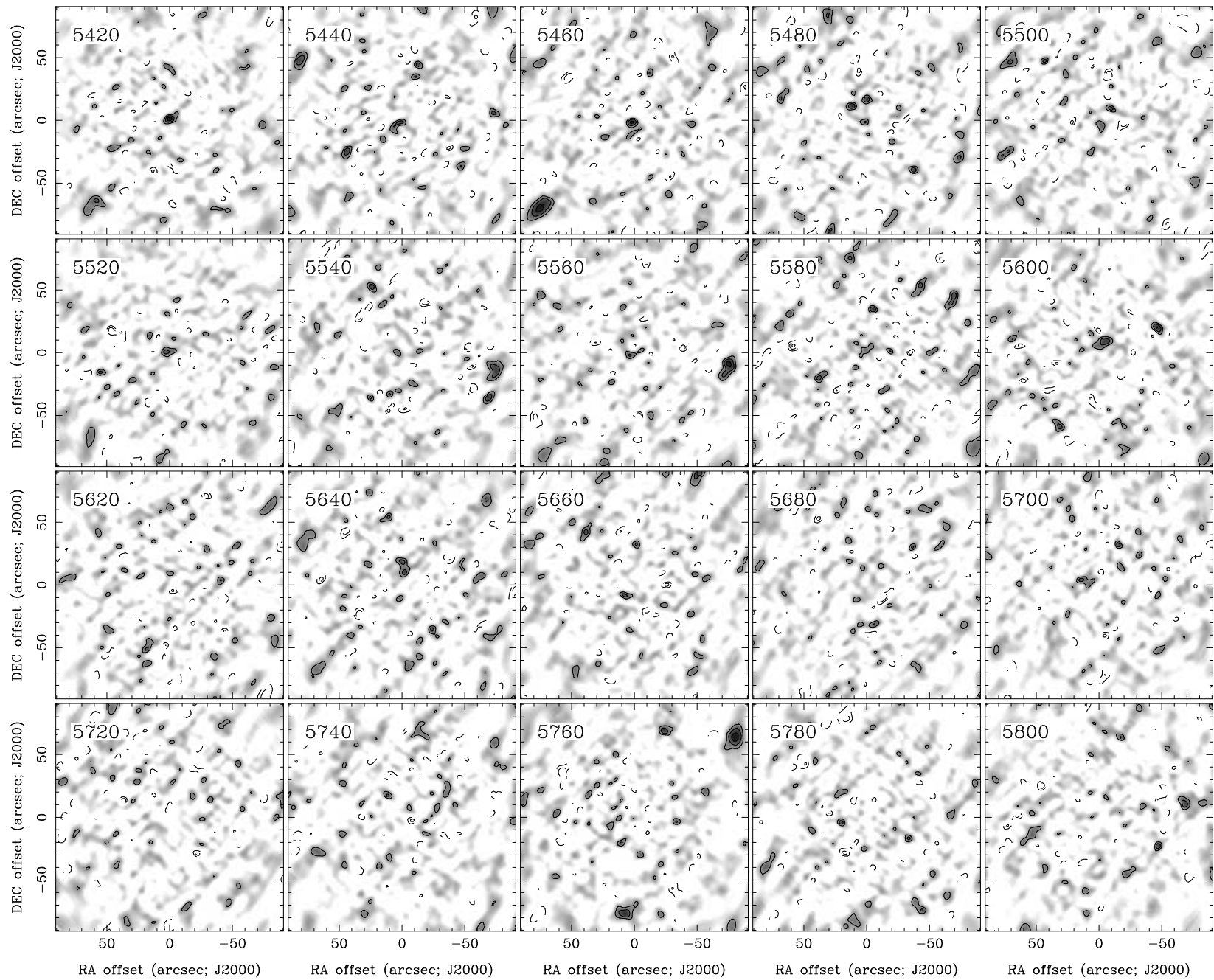
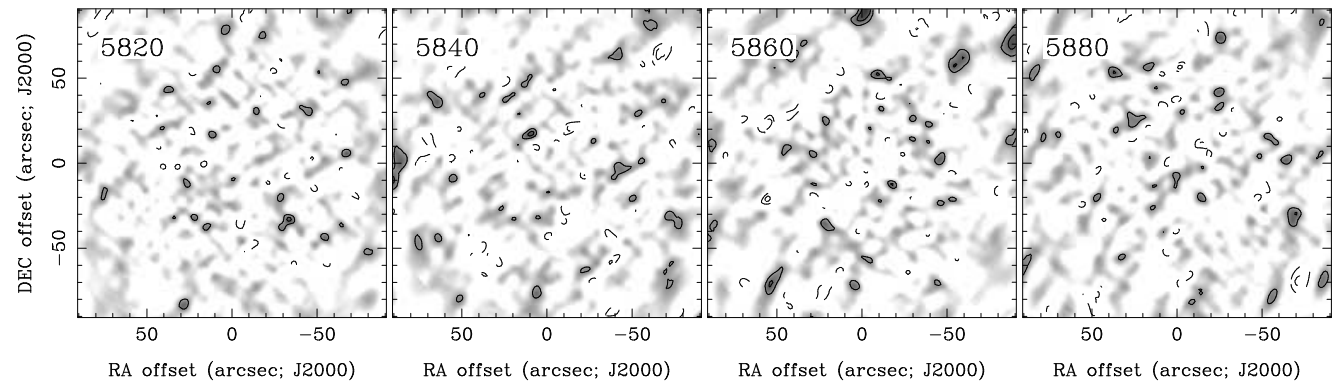


RA, DEC, VRAD = 13:16:12.300, +30:57:01.10, 5.02000E+03 km/s at pixel (134.00, 130.00, 1.00)
 Spatial region : 44,40 to 224,220 Spectral inc/bin : 1/1 =20/20 (km/s)
 Pixel map image: NGC5056.co.cmnorm (NGC5056) Min/max=-0.06068/0.06519 Range = 0 to 0.0823 JY/BEAM (lin)
 Contour image: NGC5056.co.cmnorm (NGC5056) Min/max=-0.06068/0.06519 Contours x 0.01707 JY/BEAM
 Contours : -14, -12, -10, -8, -6, -5, -4, -3, -2, 2, 3, 4, 5, 6, 8, 10, 12, 14



RA, DEC, VRAD = 13:16:12.300, +30:57:01.10, 5.02000E+03 km/s at pixel (134.00, 130.00, 1.00)
 Spatial region : 44,40 to 224,220 Spectral inc/bin : 1/1 =20/20 (km/s)
 Pixel map image: NGC5056.co.cmnorm (NGC5056) Min/max=-0.06267/0.06413 Range = 0 to 0.0823 JY/BEAM (lin)
 Contour image: NGC5056.co.cmnorm (NGC5056) Min/max=-0.06267/0.06413 Contours x 0.01707 JY/BEAM
 Contours : -14, -12, -10, -8, -6, -5, -4, -3, -2, 2, 3, 4, 5, 6, 8, 10, 12, 14



RA, DEC, VRAD = 13:16:12.300, +30:57:01.10, 5.02000E+03 km/s at pixel (134.00, 130.00, 1.00)
 Spatial region : 44,40 to 224,220 Spectral inc/bin : 1/1 =20/20 (km/s)
 Pixel map image: NGC5056.co.cmnorm (NGC5056) Min/max=-0.05516/0.05254 Range = 0 to 0.0823 JY/BEAM (lin)
 Contour image: NGC5056.co.cmnorm (NGC5056) Min/max=-0.05516/0.05254 Contours x 0.01707 JY/BEAM
 Contours : -14, -12, -10, -8, -6, -5, -4, -3, -2, 2, 3, 4, 5, 6, 8, 10, 12, 14