

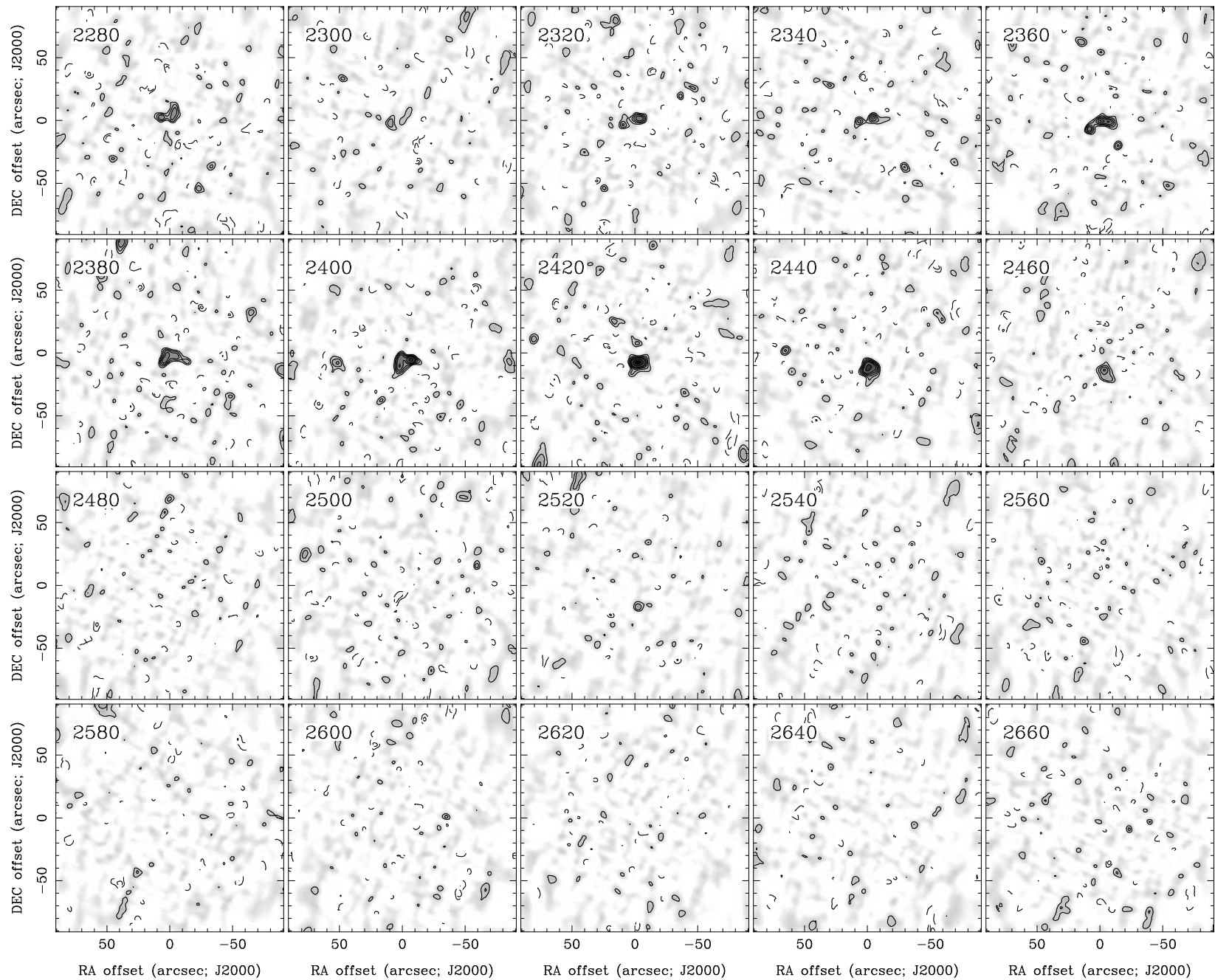
RA, DEC, VRAD = 14:27:28.400, +46:08:47.70, 1.88000E+03 km/s at pixel (132.00, 129.00, 1.00)

Spatial region : 42,39 to 222,219 Spectral inc/bin : 1/1 =20/20 (km/s)

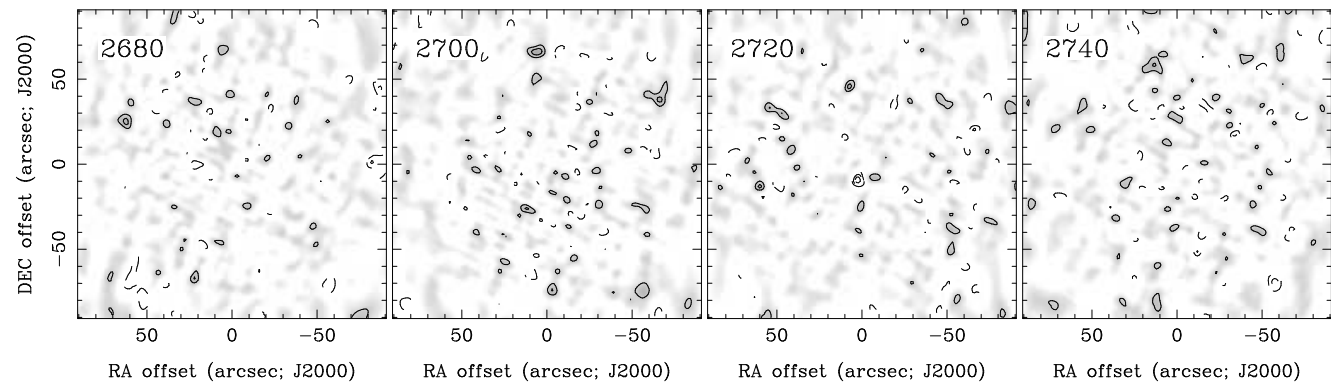
Pixel map image: NGC5633.co.cmnorm (NGC5633) Min/max=-0.06819/0.2045 Range = 0 to 0.2141 JY/BEAM (lin)

Contour image: NGC5633.co.cmnorm (NGC5633) Min/max=-0.06819/0.2045 Contours x 0.01976 JY/BEAM

Contours : -14, -12, -10, -8, -6, -5, -4, -3, -2, 2, 3, 4, 5, 6, 8, 10, 12, 14



RA, DEC, VRAD = 14:27:28.400, +46:08:47.70, 1.88000E+03 km/s at pixel (132.00, 129.00, 1.00)
 Spatial region : 42,39 to 222,219 Spectral inc/bin : 1/1 =20/20 (km/s)
 Pixel map image: NGC5633.co.cmnorm (NGC5633) Min/max=-0.06761/0.0653 Range = 0 to 0.2141 JY/BEAM (lin)
 Contour image: NGC5633.co.cmnorm (NGC5633) Min/max=-0.06761/0.0653 Contours x 0.01976 JY/BEAM
 Contours : -14, -12, -10, -8, -6, -5, -4, -3, -2, 2, 3, 4, 5, 6, 8, 10, 12, 14



RA, DEC, VRAD = 14:27:28.400, +46:08:47.70, 1.88000E+03 km/s at pixel (132.00, 129.00, 1.00)
 Spatial region : 42,39 to 222,219 Spectral inc/bin : 1/1 =20/20 (km/s)
 Pixel map image: NGC5633.co.cmnorm (NGC5633) Min/max=-0.06637/0.061 Range = 0 to 0.2141 JY/BEAM (lin)
 Contour image: NGC5633.co.cmnorm (NGC5633) Min/max=-0.06637/0.061 Contours x 0.01976 JY/BEAM
 Contours : -14, -12, -10, -8, -6, -5, -4, -3, -2, 2, 3, 4, 5, 6, 8, 10, 12, 14