

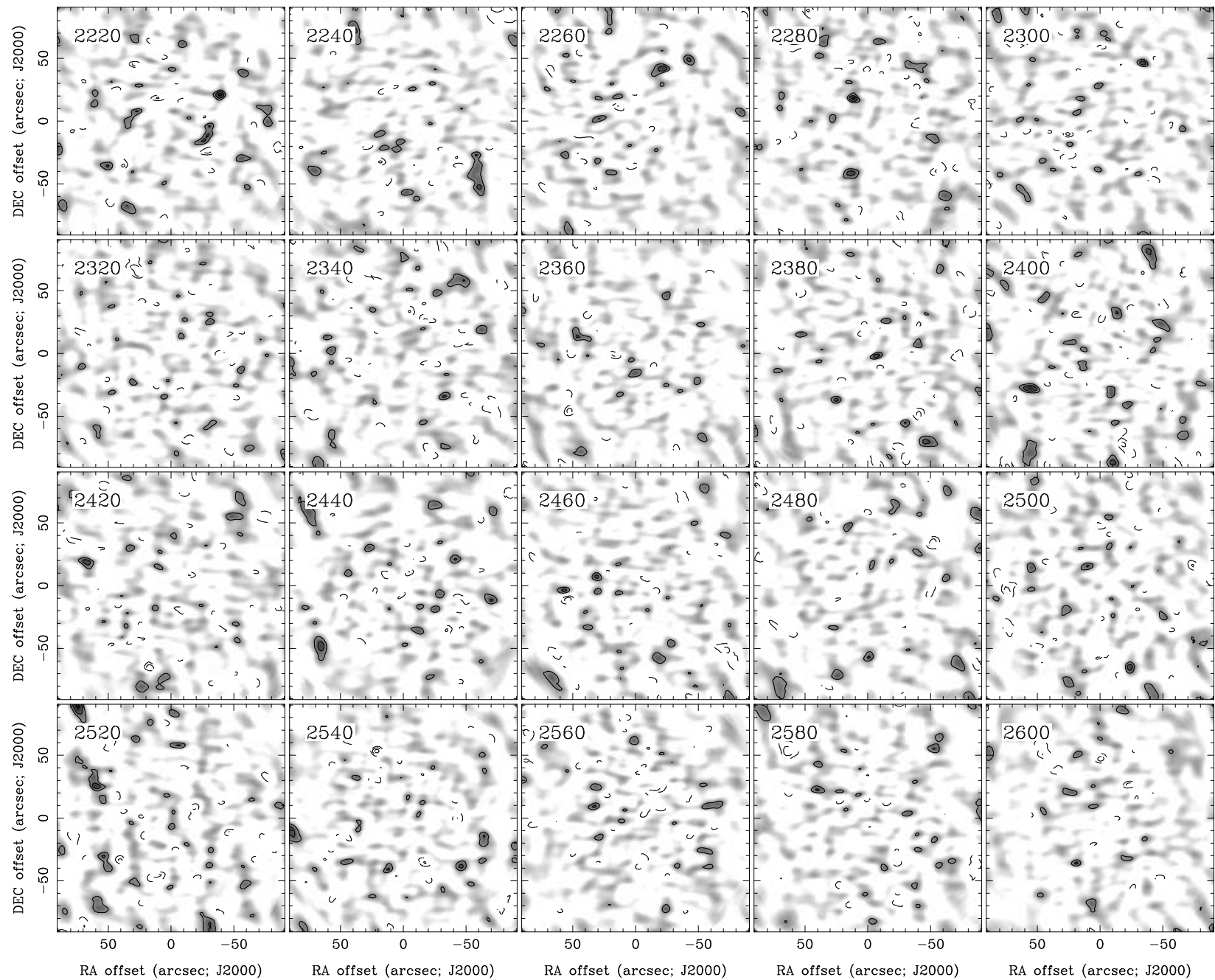
RA, DEC, VRAD = 14:34:45.000, +48:40:12.80, 1.82000E+03 km/s at pixel (132.00, 129.00, 1.00)

Spatial region : 42,39 to 222,219 Spectral inc/bin : 1/1 =20/20 (km/s)

Pixel map image: NGC5682.co.cmnorm (NGC5682) Min/max=-0.08151/0.08792 Range = 0 to 0.1136 JY/BEAM (lin)

Contour image: NGC5682.co.cmnorm (NGC5682) Min/max=-0.08151/0.08792 Contours x 0.02473 JY/BEAM

Contours : -14, -12, -10, -8, -6, -5, -4, -3, -2, 2, 3, 4, 5, 6, 8, 10, 12, 14



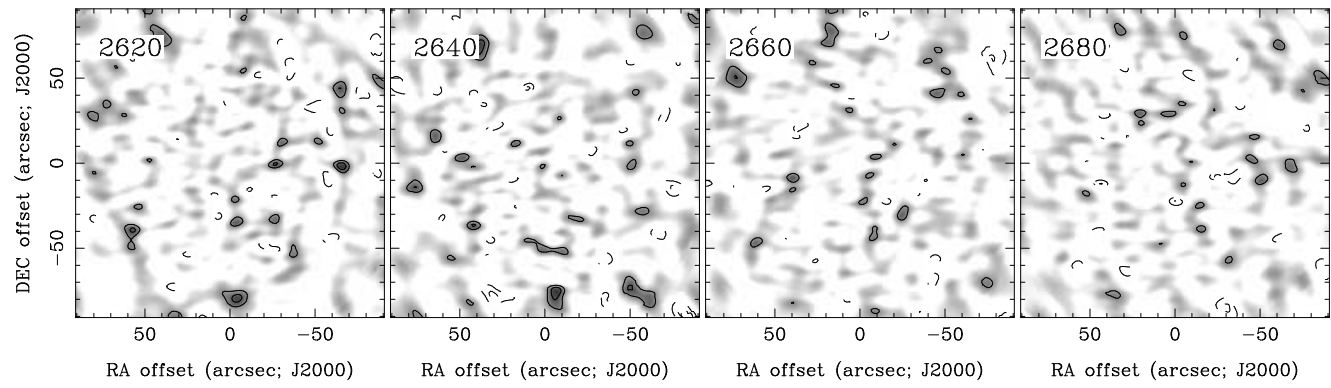
RA, DEC, VRAD = 14:34:45.000, +48:40:12.80, 1.82000E+03 km/s at pixel (132.00, 129.00, 1.00)

Spatial region : 42,39 to 222,219 Spectral inc/bin : 1/1 =20/20 (km/s)

Pixel map image: NGC5682.co.cmnorm (NGC5682) Min/max=-0.08579/0.0793 Range = 0 to 0.1136 JY/BEAM (lin)

Contour image: NGC5682.co.cmnorm (NGC5682) Min/max=-0.08579/0.0793 Contours x 0.02473 JY/BEAM

Contours : -14, -12, -10, -8, -6, -5, -4, -3, -2, 2, 3, 4, 5, 6, 8, 10, 12, 14



RA, DEC, VRAD = 14:34:45.000, +48:40:12.80, 1.82000E+03 km/s at pixel (132.00, 129.00, 1.00)
 Spatial region : 42,39 to 222,219 Spectral inc/bin : 1/1 =20/20 (km/s)
 Pixel map image: NGC5682.co.cmnorm (NGC5682) Min/max=-0.08347/0.0702 Range = 0 to 0.1136 JY/BEAM (lin)
 Contour image: NGC5682.co.cmnorm (NGC5682) Min/max=-0.08347/0.0702 Contours x 0.02473 JY/BEAM
 Contours : -14, -12, -10, -8, -6, -5, -4, -3, -2, 2, 3, 4, 5, 6, 8, 10, 12, 14