

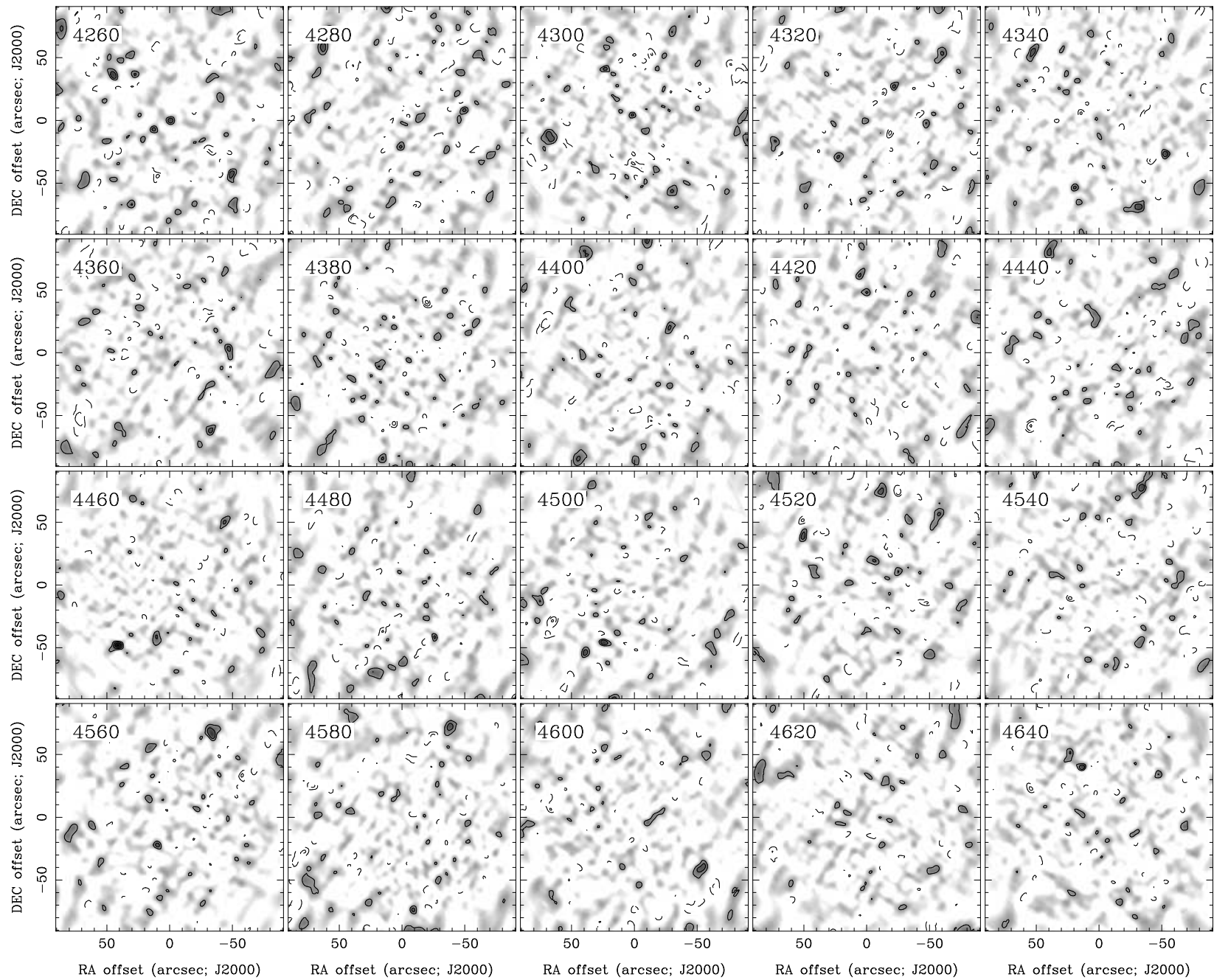
RA, DEC, VRAD = 16:03:01.100, +20:57:21.30, 3.86000E+03 km/s at pixel (133.00, 130.00, 1.00)

Spatial region : 43,40 to 223,220 Spectral inc/bin : 1/1 =20/20 (km/s)

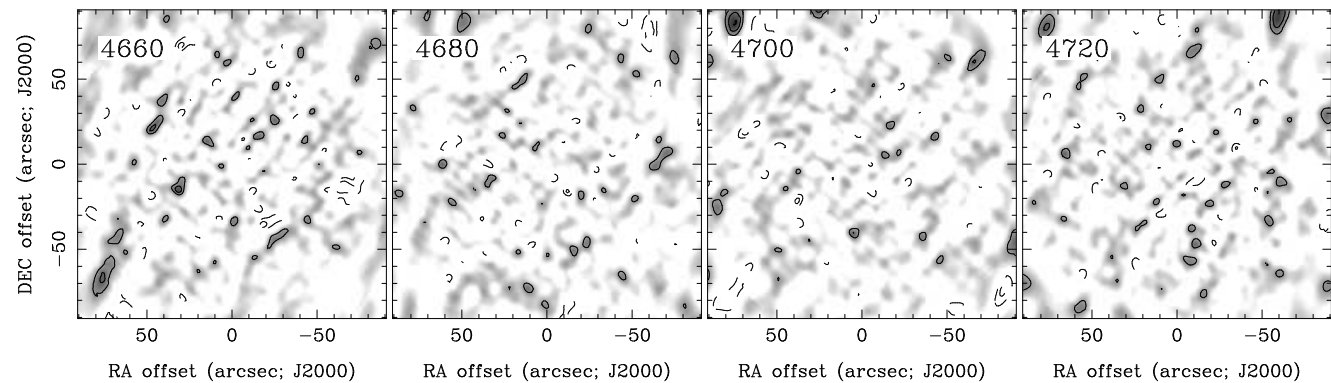
Pixel map image: NGC6032.co.cmnorm (NGC6032) Min/max=-0.0824/0.08823 Range = 0 to 0.114 JY/BEAM (lin)

Contour image: NGC6032.co.cmnorm (NGC6032) Min/max=-0.0824/0.08823 Contours x 0.0227 JY/BEAM

Contours : -14, -12, -10, -8, -6, -5, -4, -3, -2, 2, 3, 4, 5, 6, 8, 10, 12, 14



RA, DEC, VRAD = 16:03:01.100, +20:57:21.30, 3.86000E+03 km/s at pixel (133.00, 130.00, 1.00)  
 Spatial region : 43,40 to 223,220 Spectral inc/bin : 1/1 =20/20 (km/s)  
 Pixel map image: NGC6032.co.cmnorm (NGC6032) Min/max=-0.07415/0.08694 Range = 0 to 0.114 JY/BEAM (lin)  
 Contour image: NGC6032.co.cmnorm (NGC6032) Min/max=-0.07415/0.08694 Contours x 0.0227 JY/BEAM  
 Contours : -14, -12, -10, -8, -6, -5, -4, -3, -2, 2, 3, 4, 5, 6, 8, 10, 12, 14



RA, DEC, VRAD = 16:03:01.100, +20:57:21.30, 3.86000E+03 km/s at pixel (133.00, 130.00, 1.00)  
 Spatial region : 43,40 to 223,220 Spectral inc/bin : 1/1 =20/20 (km/s)  
 Pixel map image: NGC6032.co.cmnorm (NGC6032) Min/max=-0.07055/0.08636 Range = 0 to 0.114 JY/BEAM (lin)  
 Contour image: NGC6032.co.cmnorm (NGC6032) Min/max=-0.07055/0.08636 Contours x 0.0227 JY/BEAM  
 Contours : -14, -12, -10, -8, -6, -5, -4, -3, -2, 2, 3, 4, 5, 6, 8, 10, 12, 14