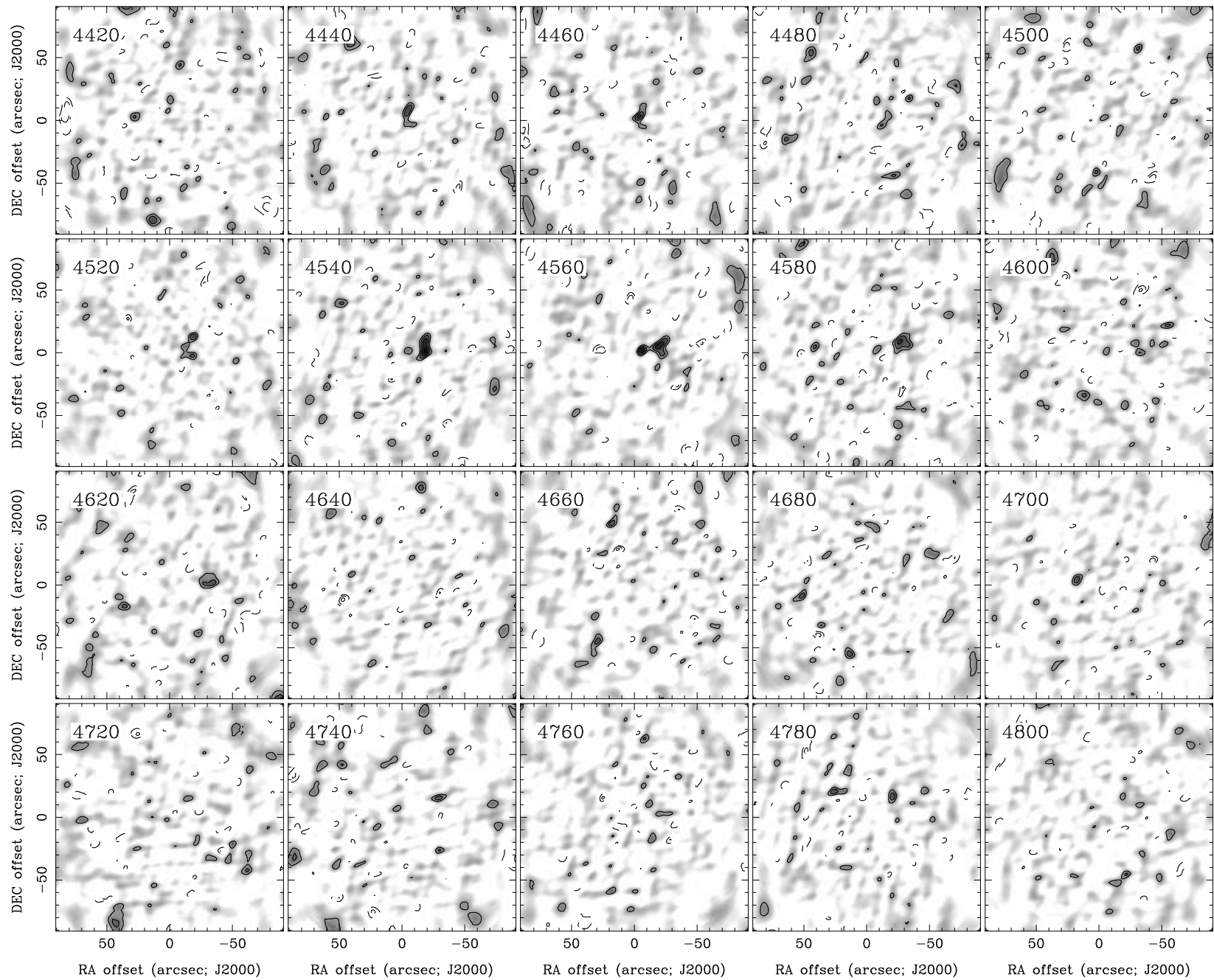


RA, DEC, VRAD = 16:05:52.000, +21:29:05.70, 4.02000E+03 km/s at pixel (133.00, 130.00, 1.00)
 Spatial region : 43,40 to 223,220 Spectral inc/bin : 1/1 =20/20 (km/s)
 Pixel map image: NGC6060.co.cmnorm (NGC6060) Min/max=-0.101/0.11 Range = 0 to 0.171 JY/BEAM (lin)
 Contour image: NGC6060.co.cmnorm (NGC6060) Min/max=-0.101/0.11 Contours x 0.03286 JY/BEAM
 Contours : -14, -12, -10, -8, -6, -5, -4, -3, -2, 2, 3, 4, 5, 6, 8, 10, 12, 14



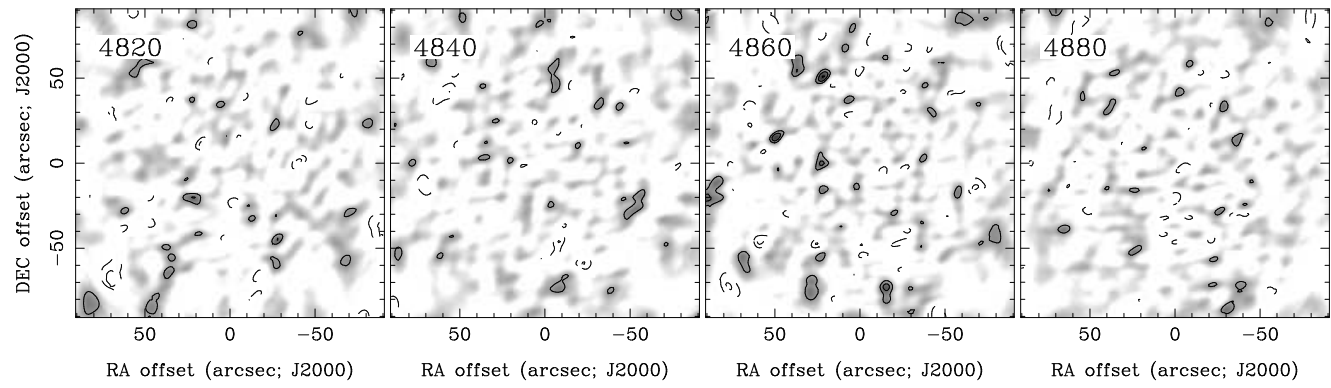
RA, DEC, VRAD = 16:05:52.000, +21:29:05.70, 4.02000E+03 km/s at pixel (133.00, 130.00, 1.00)

Spatial region : 43,40 to 223,220 Spectral inc/bin : 1/1 =20/20 (km/s)

Pixel map image: NGC6060.co.cmnorm (NGC6060) Min/max=-0.1102/0.105 Range = 0 to 0.171 JY/BEAM (lin)

Contour image: NGC6060.co.cmnorm (NGC6060) Min/max=-0.1102/0.105 Contours x 0.03286 JY/BEAM

Contours : -14, -12, -10, -8, -6, -5, -4, -3, -2, 2, 3, 4, 5, 6, 8, 10, 12, 14



RA, DEC, VRAD = 16:05:52.000, +21:29:05.70, 4.02000E+03 km/s at pixel (133.00, 130.00, 1.00)
 Spatial region : 43,40 to 223,220 Spectral inc/bin : 1/1 =20/20 (km/s)
 Pixel map image: NGC6060.co.cmnorm (NGC6060) Min/max=-0.098/0.09477 Range = 0 to 0.171 JY/BEAM (lin)
 Contour image: NGC6060.co.cmnorm (NGC6060) Min/max=-0.098/0.09477 Contours x 0.03286 JY/BEAM
 Contours : -14, -12, -10, -8, -6, -5, -4, -3, -2, 2, 3, 4, 5, 6, 8, 10, 12, 14