

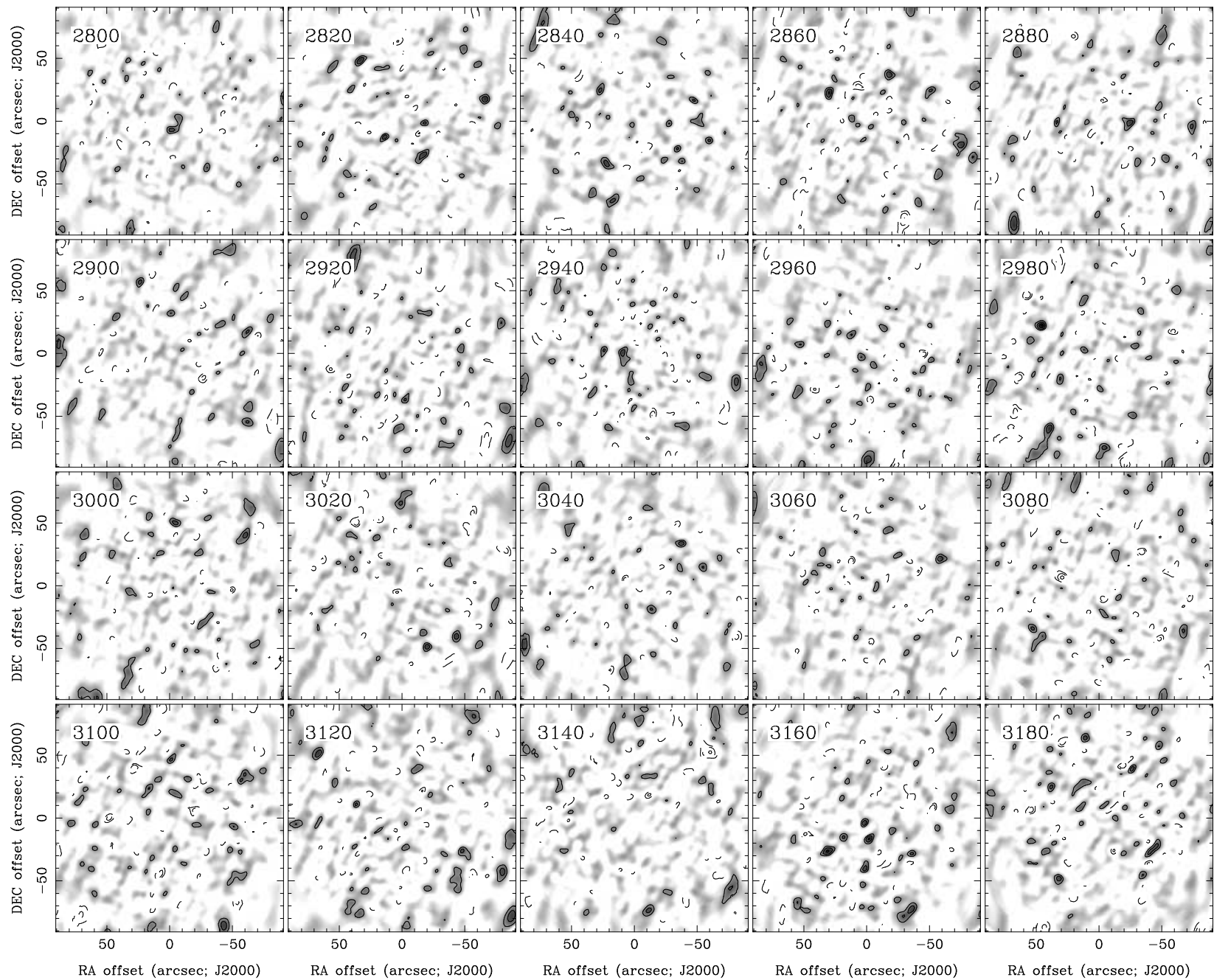
RA, DEC, VRAD = 16:07:13.000, +07:58:44.40, 2.40000E+03 km/s at pixel (133.00, 129.00, 1.00)

Spatial region : 43,39 to 223,219 Spectral inc/bin : 1/1 =20/20 (km/s)

Pixel map image: NGC6063.co.cmnorm (NGC6063) Min/max=-0.0886/0.08116 Range = 0 to 0.1192 JY/BEAM (lin)

Contour image: NGC6063.co.cmnorm (NGC6063) Min/max=-0.0886/0.08116 Contours x 0.02559 JY/BEAM

Contours : -14, -12, -10, -8, -6, -5, -4, -3, -2, 2, 3, 4, 5, 6, 8, 10, 12, 14



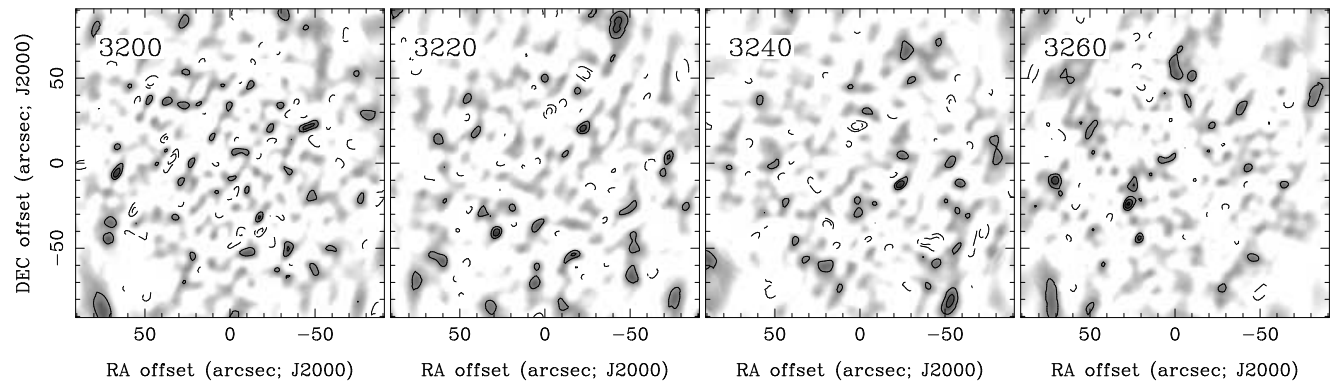
RA, DEC, VRAD = 16:07:13.000, +07:58:44.40, 2.40000E+03 km/s at pixel (133.00, 129.00, 1.00)

Spatial region : 43,39 to 223,219 Spectral inc/bin : 1/1 =20/20 (km/s)

Pixel map image: NGC6063.co.cmnorm (NGC6063) Min/max=-0.09899/0.09002 Range = 0 to 0.1192 JY/BEAM (lin)

Contour image: NGC6063.co.cmnorm (NGC6063) Min/max=-0.09899/0.09002 Contours x 0.02559 JY/BEAM

Contours : -14, -12, -10, -8, -6, -5, -4, -3, -2, 2, 3, 4, 5, 6, 8, 10, 12, 14



RA, DEC, VRAD = 16:07:13.000, +07:58:44.40, 2.40000E+03 km/s at pixel (133.00, 129.00, 1.00)  
Spatial region : 43,39 to 223,219 Spectral inc/bin : 1/1 =20/20 (km/s)  
Pixel map image: NGC6063.co.cmnorm (NGC6063) Min/max=-0.07548/0.1061 Range = 0 to 0.1192 JY/BEAM (lin)  
Contour image: NGC6063.co.cmnorm (NGC6063) Min/max=-0.07548/0.1061 Contours x 0.02559 JY/BEAM  
Contours : -14, -12, -10, -8, -6, -5, -4, -3, -2, 2, 3, 4, 5, 6, 8, 10, 12, 14