

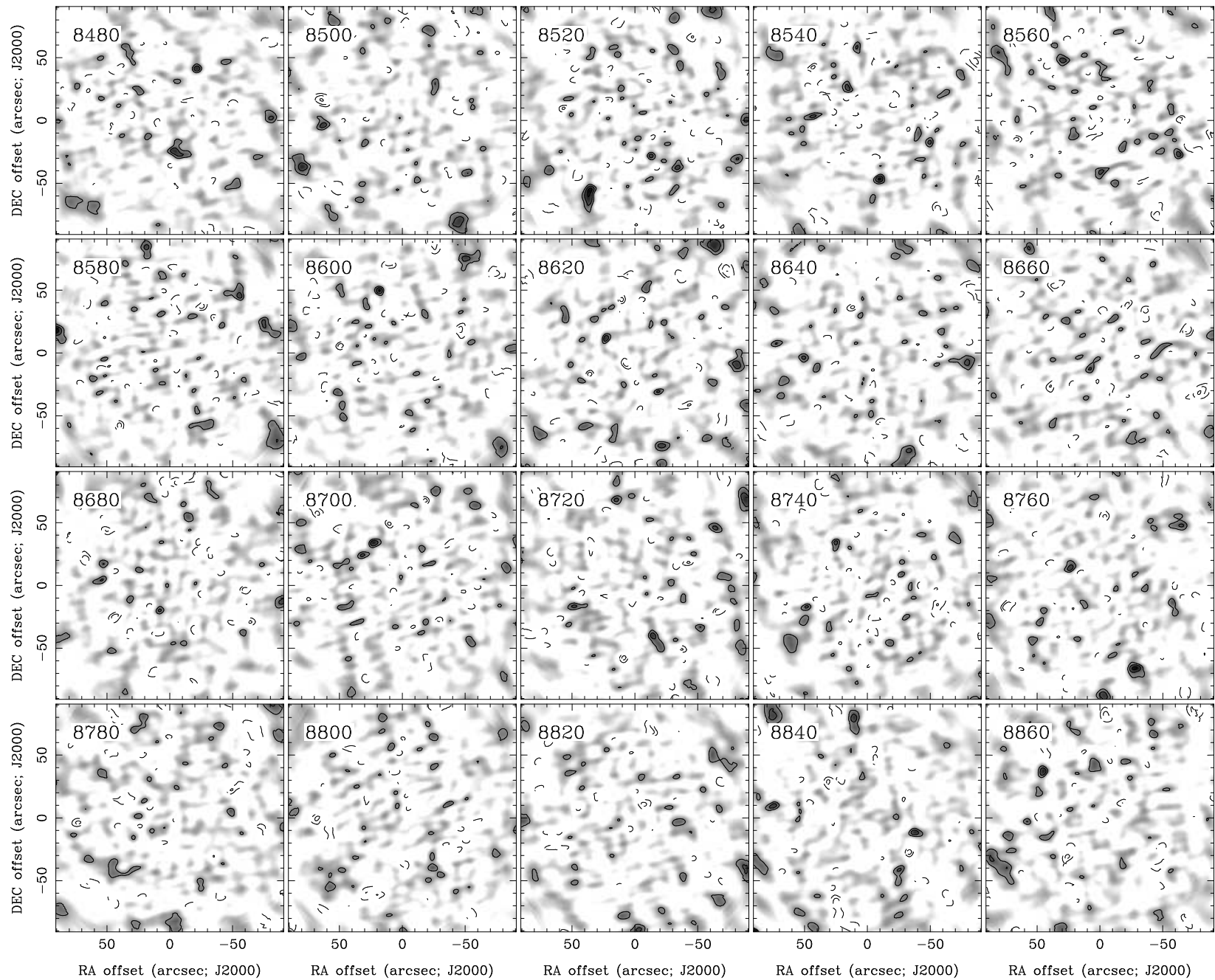
RA, DEC, VRAD = 16:25:10.300, +40:53:34.30, 8.08000E+03 km/s at pixel (135.00, 131.00, 1.00)

Spatial region : 45,41 to 225,221 Spectral inc/bin : 1/1 =20/20 (km/s)

Pixel map image: NGC6146.co.cmnorm (NGC6146) Min/max=-0.06312/0.05689 Range = 0 to 0.07893 JY/BEAM (lin)

Contour image: NGC6146.co.cmnorm (NGC6146) Min/max=-0.06312/0.05689 Contours x 0.01756 JY/BEAM

Contours : -14, -12, -10, -8, -6, -5, -4, -3, -2, 2, 3, 4, 5, 6, 8, 10, 12, 14



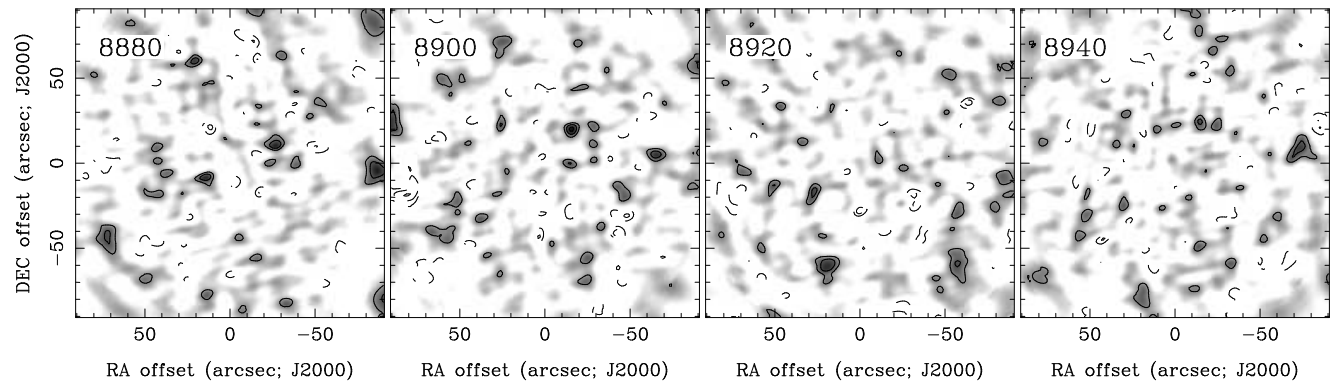
RA, DEC, VRAD = 16:25:10.300, +40:53:34.30, 8.08000E+03 km/s at pixel (135.00, 131.00, 1.00)

Spatial region : 45,41 to 225,221 Spectral inc/bin : 1/1 =20/20 (km/s)

Pixel map image: NGC6146.co.cmnorm (NGC6146) Min/max=-0.06173/0.06837 Range = 0 to 0.07893 JY/BEAM (lin)

Contour image: NGC6146.co.cmnorm (NGC6146) Min/max=-0.06173/0.06837 Contours x 0.01756 JY/BEAM

Contours : -14, -12, -10, -8, -6, -5, -4, -3, -2, 2, 3, 4, 5, 6, 8, 10, 12, 14



RA, DEC, VRAD = 16:25:10.300, +40:53:34.30, 8.08000E+03 km/s at pixel (135.00, 131.00, 1.00)
 Spatial region : 45,41 to 225,221 Spectral inc/bin : 1/1 =20/20 (km/s)
 Pixel map image: NGC6146.co.cmnorm (NGC6146) Min/max=-0.05348/0.06036 Range = 0 to 0.07893 JY/BEAM (lin)
 Contour image: NGC6146.co.cmnorm (NGC6146) Min/max=-0.05348/0.06036 Contours x 0.01756 JY/BEAM
 Contours : -14, -12, -10, -8, -6, -5, -4, -3, -2, 2, 3, 4, 5, 6, 8, 10, 12, 14