

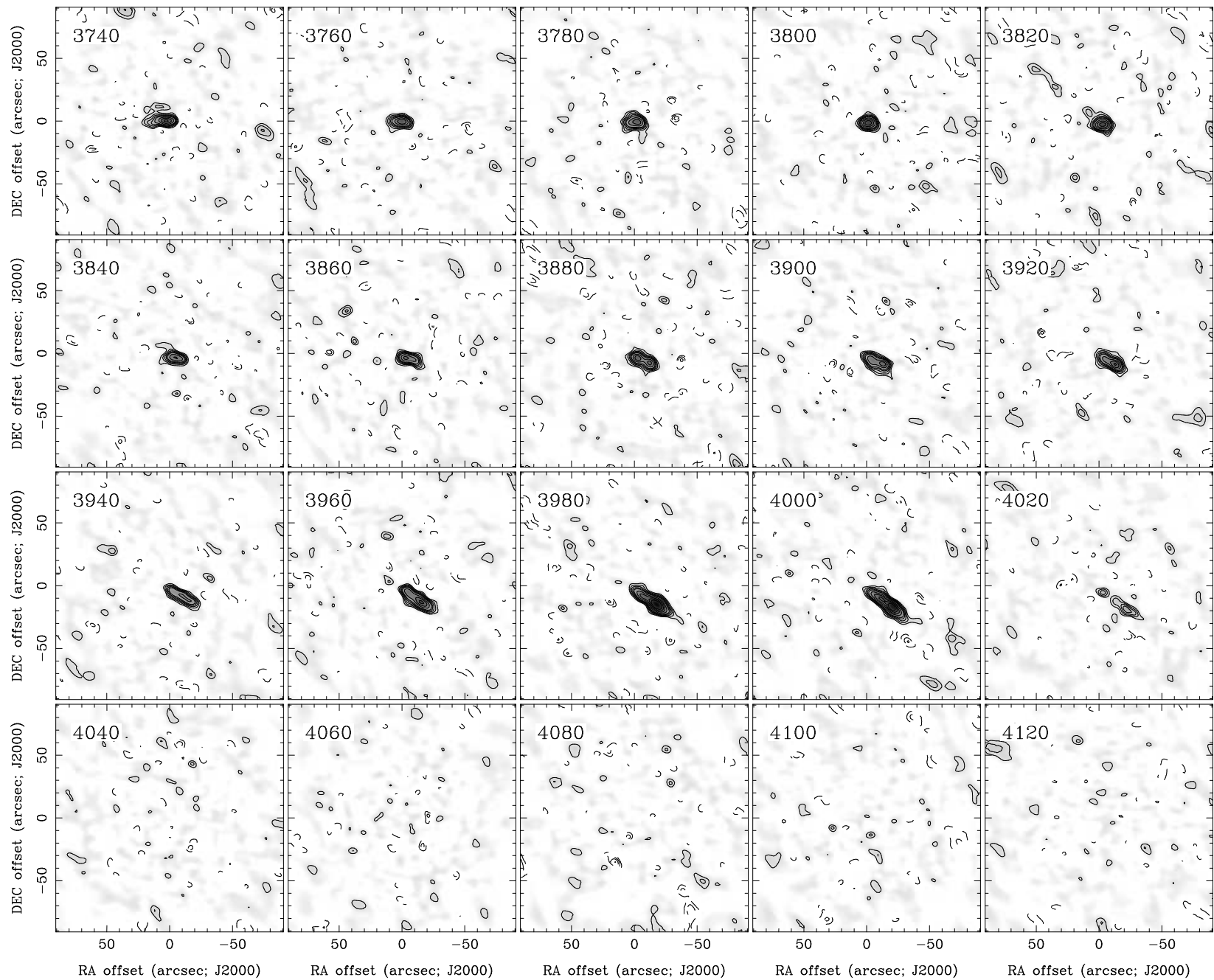
RA, DEC, VRAD = 17:18:41.100, +60:36:29.40, 3.34000E+03 km/s at pixel (133.00, 129.00, 1.00)

Spatial region : 43,39 to 223,219 Spectral inc/bin : 1/1 =20/20 (km/s)

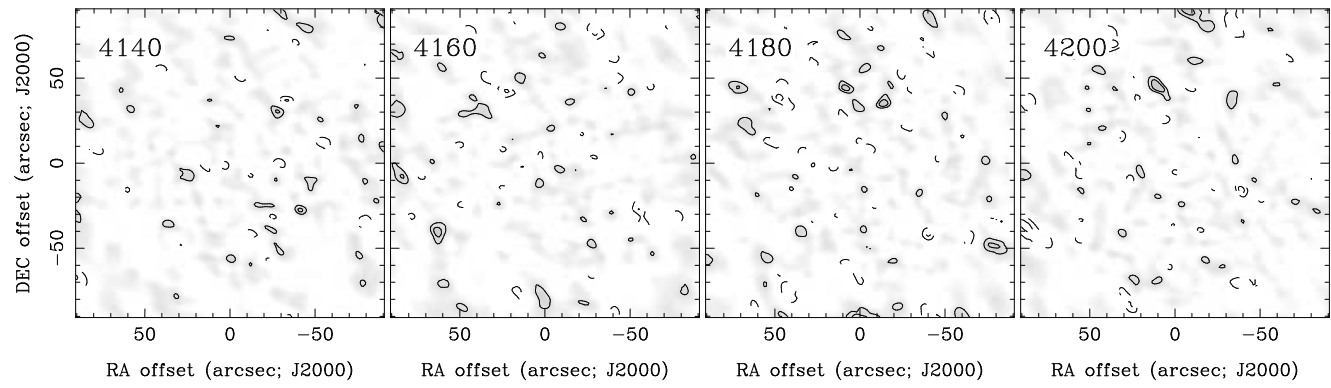
Pixel map image: NGC6361.co.cmnorm (NGC6361) Min/max=-0.08948/0.2816 Range = 0 to 0.3735 JY/BEAM (lin)

Contour image: NGC6361.co.cmnorm (NGC6361) Min/max=-0.08948/0.2816 Contours x 0.0205 JY/BEAM

Contours : -14, -12, -10, -8, -6, -5, -4, -3, -2, 2, 3, 4, 5, 6, 8, 10, 12, 14



RA, DEC, VRAD = 17:18:41.100, +60:36:29.40, 3.34000E+03 km/s at pixel (133.00, 129.00, 1.00)
 Spatial region : 43,39 to 223,219 Spectral inc/bin : 1/1 =20/20 (km/s)
 Pixel map image: NGC6361.co.cmnorm (NGC6361) Min/max=-0.06133/0.06911 Range = 0 to 0.3735 JY/BEAM (lin)
 Contour image: NGC6361.co.cmnorm (NGC6361) Min/max=-0.06133/0.06911 Contours x 0.0205 JY/BEAM
 Contours : -14, -12, -10, -8, -6, -5, -4, -3, -2, 2, 3, 4, 5, 6, 8, 10, 12, 14



RA, DEC, VRAD = 17:18:41.100, +60:36:29.40, 3.34000E+03 km/s at pixel (133.00, 129.00, 1.00)
 Spatial region : 43,39 to 223,219 Spectral inc/bin : 1/1 =20/20 (km/s)
 Pixel map image: NGC6361.co.cmnorm (NGC6361) Min/max=-0.07043/0.08009 Range = 0 to 0.3735 JY/BEAM (lin)
 Contour image: NGC6361.co.cmnorm (NGC6361) Min/max=-0.07043/0.08009 Contours x 0.0205 JY/BEAM
 Contours : -14, -12, -10, -8, -6, -5, -4, -3, -2, 2, 3, 4, 5, 6, 8, 10, 12, 14