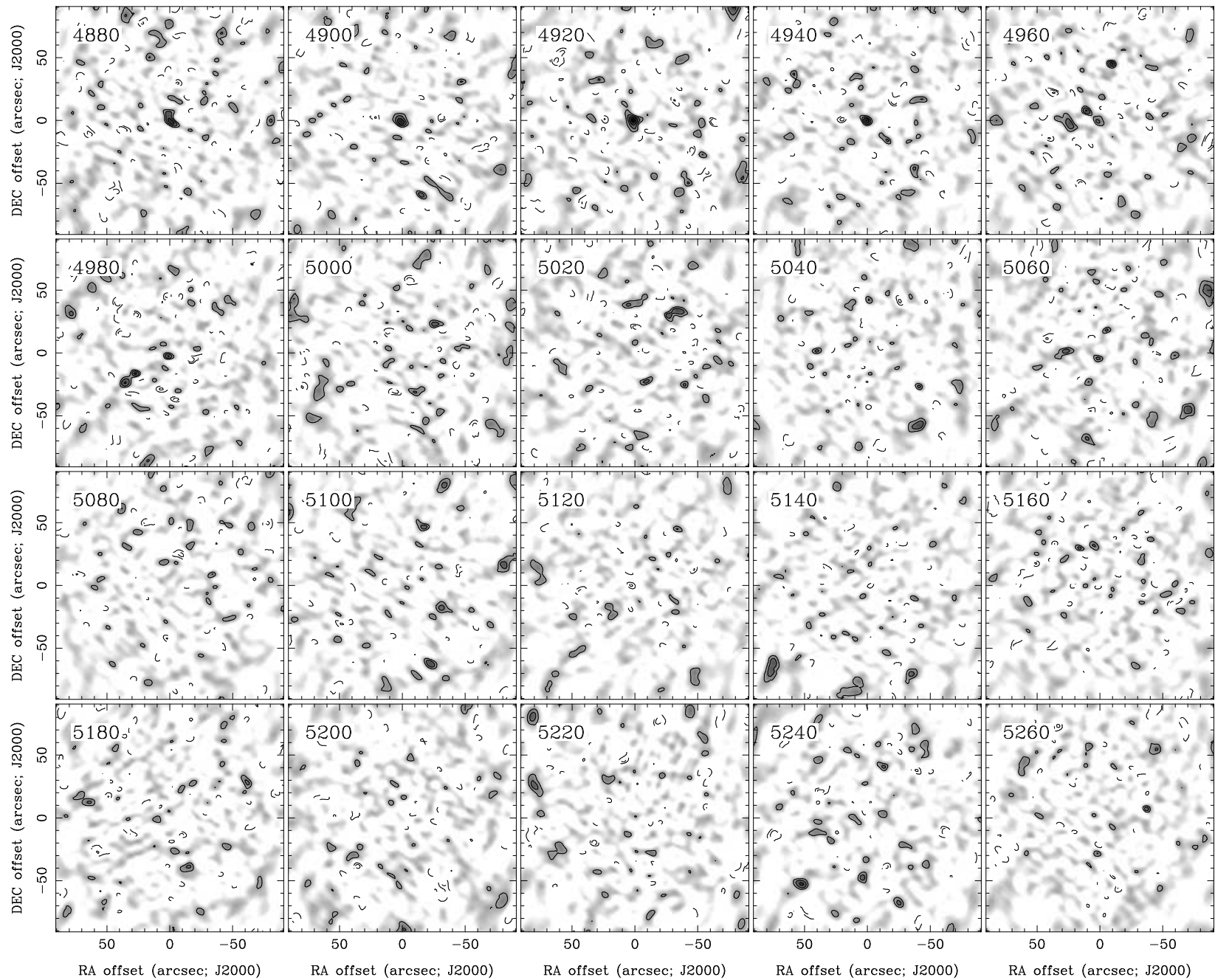
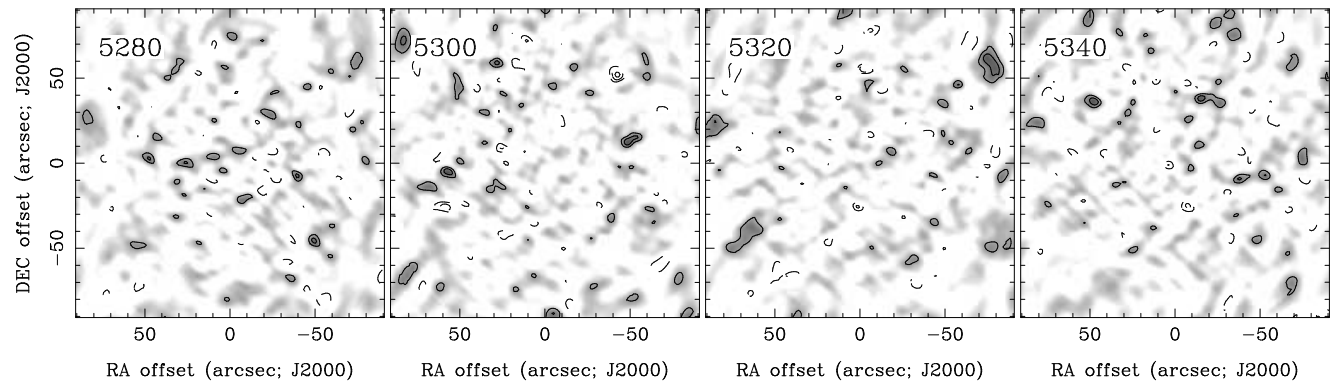


RA, DEC, VRAD = 00:04:24.500, +31:28:19.20, 4.48000E+03 km/s at pixel (133.00, 130.00, 1.00)
 Spatial region : 43,40 to 223,220 Spectral inc/bin : 1/1 =20/20 (km/s)
 Pixel map image: NGC7819.co.cmnorm (NGC7819) Min/max=-0.06947/0.08434 Range = 0 to 0.1169 JY/BEAM (lin)
 Contour image: NGC7819.co.cmnorm (NGC7819) Min/max=-0.06947/0.08434 Contours x 0.02141 JY/BEAM
 Contours : -14, -12, -10, -8, -6, -5, -4, -3, -2, 2, 3, 4, 5, 6, 8, 10, 12, 14



RA, DEC, VRAD = 00:04:24.500, +31:28:19.20, 4.48000E+03 km/s at pixel (133.00, 130.00, 1.00)
 Spatial region : 43,40 to 223,220 Spectral inc/bin : 1/1 =20/20 (km/s)
 Pixel map image: NGC7819.co.cmnorm (NGC7819) Min/max=-0.06885/0.07719 Range = 0 to 0.1169 JY/BEAM (lin)
 Contour image: NGC7819.co.cmnorm (NGC7819) Min/max=-0.06885/0.07719 Contours x 0.02141 JY/BEAM
 Contours : -14, -12, -10, -8, -6, -5, -4, -3, -2, 2, 3, 4, 5, 6, 8, 10, 12, 14



RA, DEC, VRAD = 00:04:24.500, +31:28:19.20, 4.48000E+03 km/s at pixel (133.00, 130.00, 1.00)
Spatial region : 43,40 to 223,220 Spectral inc/bin : 1/1 =20/20 (km/s)
Pixel map image: NGC7819.co.cmnorm (NGC7819) Min/max=-0.06969/0.07718 Range = 0 to 0.1169 JY/BEAM (lin)
Contour image: NGC7819.co.cmnorm (NGC7819) Min/max=-0.06969/0.07718 Contours x 0.02141 JY/BEAM
Contours : -14, -12, -10, -8, -6, -5, -4, -3, -2, 2, 3, 4, 5, 6, 8, 10, 12, 14