

Target list:

Go here for some preliminary analysis [SmcAnalysis](#)

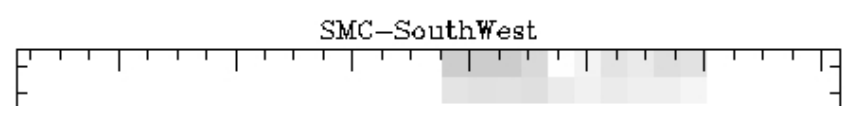
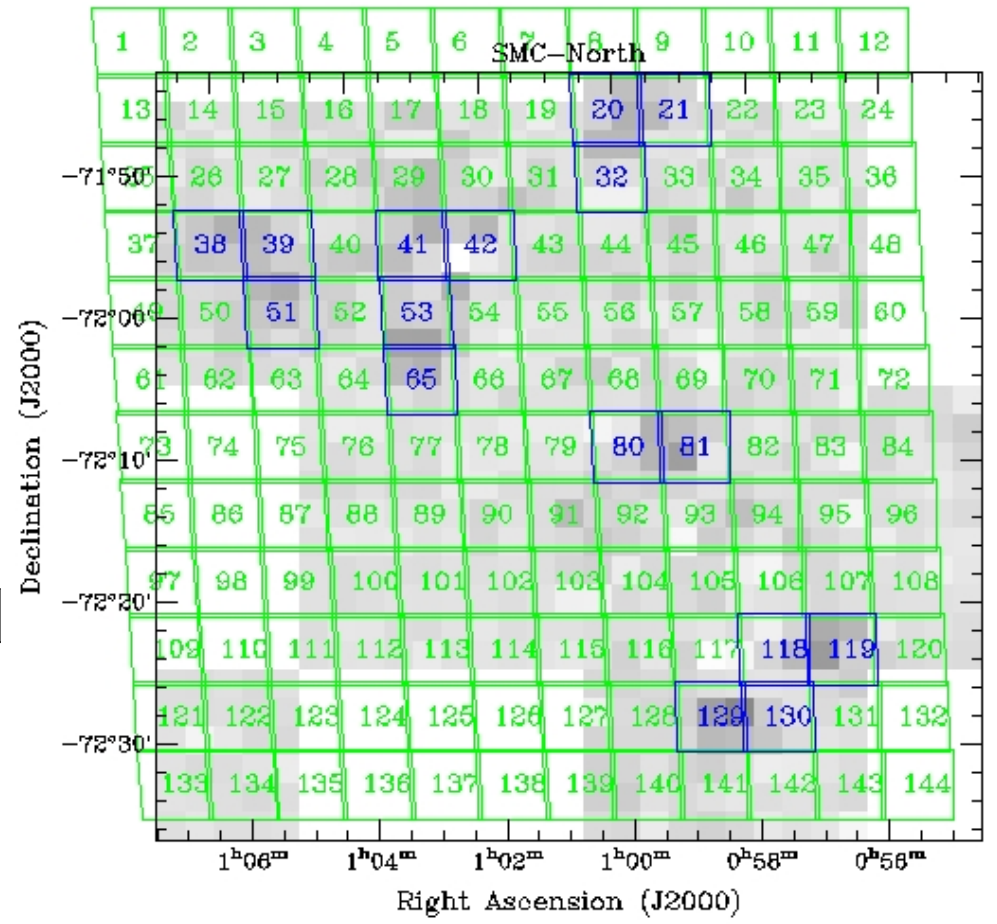
- 20:h/v/h 21:h/v/h 32:h/v/h

- 38:-/- 39:-/- 51:-/-

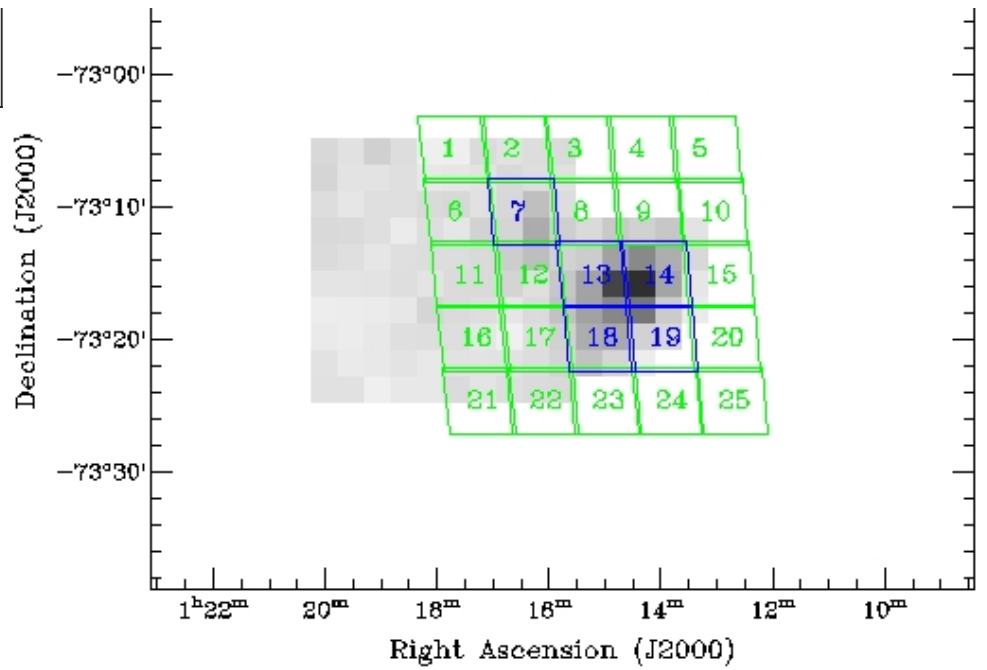
- 41:h/v/h 42:-/- 53:h/v/h 65:h/v/h

- 80:h/v/h 81:h/v/h

- 118:h/v/h 119:h/v/h 129:h/v/h 130:h/v/h



/-	13:h/v/h	14:h/v/h	18:h/v/h	19:h/v/h-
/-				



Red indicates no maps made for that field
 Yellow indicates incomplete mapping for that field
 Green indicates complete mapping for that field.

date	weather
24th Aug, 2007	Complete cover of light cloud

Source map	Datafile	Tsys	EI	Comment
SMC_nfield_20_h	2007-08-24_1444-M186.rpf	400,700/380, 600	44	
SMC_nfield_21_h	2007-08-24_1703-M186.rpf	434,732/426, 652	48	Some cloud
SMC_nfield_32_h	2007-08-24_1918-M186.rpf	394,689/386, 624	44	Some cloud, abort after scan 37
OrionKL?	2007-08-24_2022-M186.rpf	351,586/349,538	--	

date	weather
25th Aug, 2007	Clear

Source map	Datafile	Tsys	EI	Comment
SMC_nfield_32_h_part	2007-08-25_1426-M186.rpf	338,608/331, 555	44	complete map from prev. nite
SMC_nfield_20_v	2007-08-25_1546-M186.rpf	327,584/317, 530	47	
SMC_nfield_21_v	2007-08-25_1753-M186.rpf	308,556/301, 502	47	
OrionKL?	2007-08-25_1955-M186.rpf	280,491/277,453	39	

date	weather
26th Aug, 2007	Clear

Source map	Datafile	Tsys	EI	Comment
SMC_nfield_32_v	2007-08-26_1418-M186.rpf	274,512/274,479	45	

SMC_nfield_41_h	2007-08-26_1615-M186.rpf	259,483/258,442	48
SMC_nfield_53_h	2007-08-26_1811-M186.rpf	265,494/262,452	47
OrionKL?	2007-08-26_2007-M186.rpf	243,435/243,396	61

date	weather
27th Aug, 2007	Clear

Source map	Datafile	Tsys	EI	Comment
SMC_nfield_65_h	2007-08-27_1413-M186.rpf		45	
SMC_nfield_41_v	2007-08-27_1638-M186.rpf	260,479/259,439	48	
SMC_nfield_53_v	2007-08-27_1829-M186.rpf	274,505/272,457	46	stopped @ scan 76
SMC_nfield_53_v_part	2007-08-27_2051-M186.rpf	311,605/311,544	37	started from scan 76
OrionKL?	2007-08-27_2018-M186.rpf	254,450/254,424	62	
SMC_nth1 (pointed)	2007-08-27_2106-M186.rpf	280-601/2760539	37	POINT @ 00:59:48, -71:45:2

date	weather
28th Aug, 2007	Clear, then some cloud, then clear

Source map	Datafile	Tsys	EI	Comment
SMC_nfield_65_v	2007-08-28_1156-M186.rpf	361,687/356,626	36	
SMC_nfield_81_h	2007-08-28_1359-M186.rpf	331,686/330,557	44	
SMC_nfield_82_h	2007-08-28_1555-M186.rpf	440,802/467,732	48	why did I take this field?
SMC_nfield_80_h	2007-08-28_1752-M186.rpf	336,615/333,559	43	
SMC_nfield_20_h	2007-08-28_1949-M186.rpf	334,619/333,572	41	
OrionKL?	2007-08-28_2024-M186.rpf	280,493/275,444	63	

date	weather
29th Aug, 2007	Clear

Source map	Datafile	Tsys	EI	Comment
SMC_nfield_21_h	2007-08-29_1157-M186.rpf	360,659/361,625	36	
SMC_nfield_32_h	2007-08-29_1350-M186.rpf	320,585/321,534	44	
SMC_nfield_41_h	2007-08-29_1557-M186.rpf	302,544/296,484	48	
SMC_nfield_53_h	2007-08-29_1750-M186.rpf	302,548/294,481	47	
SMC_nfield_65_h	2007-08-29_1947-M186.rpf	324,560/320,531	41	Aborted after 14th scan - over time!
Orion KL	2007-08-29_-M186.rpf	271,474/261,411		Aborted after first data scan complete - over time!

date	weather
30th Aug, 2007	light cloud

Source map	Datafile	Tsys	EI	Comment
SMC_nfield_65_h_part	2007-08-30_1211-M186.rpf	37	340,570/304,543	complete scan from above
SMC_nfield_80_v	2007-08-30_1351-M186.rpf	44	310,570/304,542	
SMC_nfield_81_v	2007-08-30_1548-M186.rpf	48	287,519/279,520	
SMC_nfield_118_h	2007-08-30_1744-M186.rpf	47	288,528/273,606	
Orion KL	2007-08-30_1946-M186.rpf	60	261,462/255,619	
Orion KL	2007-08-30_1956-M186.rpf	60	263,467/271,706	

date	weather
31th Aug, 2007	clear

Source map	Datafile	Tsys	EI	Comment
SMC_nfield_119_h	2007-08-31_1144-M186.rpf	363,695/362,603	36	
SMC_nfield_129_h	2007-08-31_1335-M186.rpf	326,600/321,528	43	
SMC_nfield_130_h	2007-08-31_1527-M186.rpf		47	
SMC_efield_13_h	2007-08-31_1718-M186.rpf	300,544/294,482	48	
SMC_nth1.sch	2007-08-31_1912-M186.rpf	273,561/267,480	45	pointing file... spikes in bp.
SMC_nth1.sch	2007-08-31_1924-M186.rpf		45	pointing file... spikes in bp.
Orion KL	2007-08-31_1847-M186.rpf	262,470/258,404	61	

date	weather
1st Sep, 2007	clear

Source map	Datafile	Tsys	EI	Comment
SMC_efield_14_h	2007-09-01_1204-M186.rpf	281,559/276,484		
SMC_efield_18_h	2007-09-01_1407-M186.rpf	276,520/269,456	45	
SMC_efield_19_h	2007-09-01_1600-M186.rpf	280,520/269,454	48	
SMC_nfield_80_h	2007-09-01_1759-M186.rpf	284,529/276,462	44	
Orion KL	2007-09-011758_-M186.rpf	263,461/253,403	62	

date	weather
2nd Sep, 2007	Clouds

Source map	Datafile	Tsys	EI	Comment
SMC_efield_13_v	2007-09-02_1141-M186.rpf	453,827/434,689	36	
SMC_efield_14_v	2007-09-02_1334-M186.rpf	341,614/336,572	38	
SMC_efield_18_v	2007-09-02_1532-M186.rpf	372,655/360,573	38	

SMC_efield_19_v	2007-09-02_1733-M186.rpf	403,681/396,590	47	Use R_Dor for pointing thru clouds, aborted scan at #70
Orion KL	2007-09-02_1916-M186.rpf	363,608/350,537	58	

date	weather
3rd Sep, 2007	Quite cloudy

Source map	Datafile	Tsys	EI	Comment
SMC_nfield_118_v	2007-09-03_1213-M186.rpf	364,671/363,600	38	
SMC_nfield_119_v	2007-09-03_1527-M186.rpf	348,620	48	
SMC_nfield_129_v	2007-09-03_1720-M186.rpf	363,644/354,552	47	
Orion KL	2007-09-03_1924-M186.rpf		58	

date	weather
4th Sep, 2007	Clearish

Source map	Datafile	Tsys	EI	Comment
SMC_nfield_130_v	2007-09-04_1138-M186.rpf	370,685/359,600	37	
SMC_efield_13_h	2007-09-04_1328-M186.rpf	341,621/338,558	44	
SMC_efield_14_h	2007-09-04_1525-M186.rpf	320,576/309,505	48	TCS/MOPS failed on scan 54
SMC_efield_14_h_part	2007-09-04_1642-M186.rpf	312,566/310,516	48	
SMC_efield_18_h	2007-09-04_1733-M186.rpf	305,561/297,485	47	Stopped on scan #74
Orion KL	2007-09-04_1222-M186.rpf	261,469/258,431	59	

date	weather
5th Sep, 2007	Clear

Source map	Datafile	Tsys	EI	Comment
SMC_efield_19_v_part	2007-09-05_1136-M186.rpf	323,620/314,541	37	attens poorly set
SMC_efield_18_h_part	2007-09-05_1203-M186.rpf	320,605/315,551	39	attens poorly set
SMC_nfield_118_h	2007-09-05_1230-M186.rpf	316,616/311,533	40	
SMC_nfield_119_h	2007-09-05_1422-M186.rpf	299,552/293,487	46	
SMC_nfield_129_h	2007-09-05_1613-M186.rpf	297,536/291,487	49	
SMC_nfield_130_h	2007-09-05_1803-M186.rpf	308,587/302,519	45	Stopped at scan 54
Orion KL	2007-09-05_1921-M186.rpf		60	

date	weather
6th Sep, 2007	Clear

Source map	Datafile	Tsys	EI	Comment
SMC_nfield_130_h	2007-09-05_1119-M186.rpf	382,715/375,642	36	

SMC_efield_19_h	2007-09-05_1219-M186.rpf	359,669/356,590	40
SMC_efield_81_h	2007-09-05_1416-M186.rpf	320,575/317,537	48
Orion KL	2007-09-06_1915-M186.rpf		60

-- [ErikMuller](#) - 22 Aug 2007

This topic: MopraSmc > [MopraSmc?](#) > SmcNandSE
Topic revision: r18 - 15 May 2008 - 03:01:40 - [ErikMuller](#)

Copyright © by the contributing authors. All material on this collaboration platform is the property of the contributing authors.

Ideas, requests, problems regarding Foswiki? [Send feedback](#)

