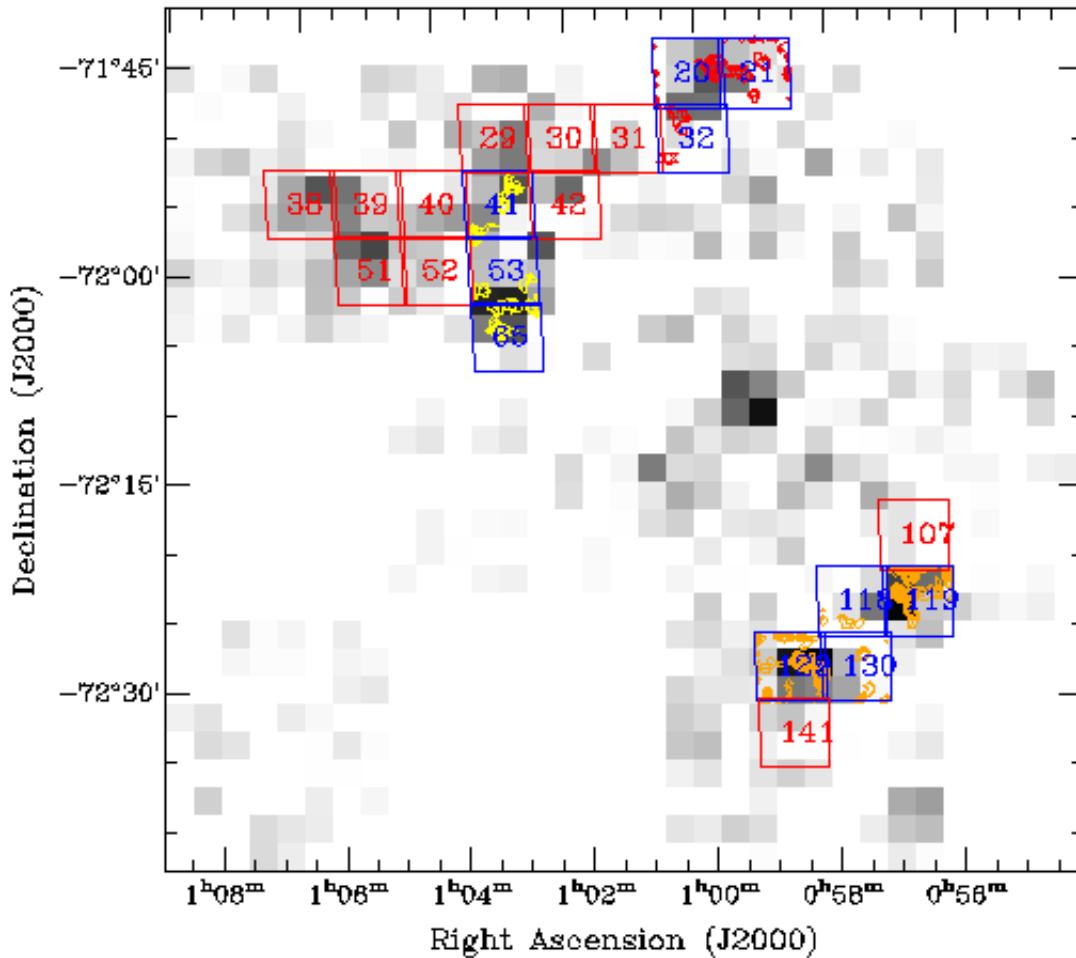


The SMC is allocated ~4 hours a day, over 51 days for 2008.

We aim to:

- re-observe 10 fields in the SMC, to improve sensitivity on existing observations.
- observe 11 'new' fields - i.e. fields that have not been observed before.



Here, the fields in red are those that have no current observations  
The fields that are in blue are (almost) half complete.

Fields that have not yet been observed represent the priority for the 2008 season, and these should be observed to a total of 7 hours per field to bring them up to a similar sensitivity as the existing data (11 un-observed fields, will require ~77 hours (~half the available SMC time for 2008), then we do it **ALL** over again.

Erik has created faster schedule files for these maps, where the scans are spaced ~15" asec from one another. This is slightly over twice the spacing of the <2007 schedule files. The time taken for to complete one map will be roughly 42 min, so four maps in one 4 hour section will be easy. 10 maps are needed to achieve 7 hours per field.

**Progress map:**

---

						20:h/v	21:h/v		
			29:h/h/v/v	30:h/h/v/v	31:h/h/v/v	32:h/v			
38:h/h/v/v	39:h/h/v/v	40:h/h/v/v	41:h/v	42:h/h/v/v					
	51:h/h/v/v	52:h/h/v/v	53:h/v						
			65:h/v						
									107:h/h/v/v
								118:h/v	119:h/v
							129:h/h/v/v	130:h/v	
							141:h/h/v/v		

No maps made yet  
Incomplete mapping  
Mapping complete

## M300 SMC Observing Status

The recorded Tsys and elevation correspond to the start of the map for the 12CO line, Pol A. The RMS is in raw (T\_A\*) K units per 32 kHz channel with Gaussian beam weighting.

### North20

Field Number	Correlator File	Tsys	RMS	Elev	Complete?	Weather
20H	2008-06-19_1936-M300	617	0.69	47	Y	fog?
20V	2008-06-19_2019-M300	609	0.68	49	Y	fog?
20H	2008-06-19_2111-M300	607	0.65	49	Y	fine
20V	2008-06-19_2155-M300	563	0.63	49	N (half)	fine
20H	2008-09-03_1302-M300	636/631	0.62	42	Y (long)	some cloud?
20V	2008-09-09_1433-M300	415	0.46	47	Y (long)	clear
20H	2008-09-10_1244-M300	440	0.44	42	Y (long)	clear
20V	2008-09-17_1302-M300	500	0.52	47	Y (long)	clear
20H	2008-09-21_1347-M300	537	0.53	47	Y (long)	clear
20V	2008-09-27_1520-M300	491	0.47	47	Y (long)	clear

### North21

Field Number	Correlator File	Tsys	RMS	Elev	Complete?	Weather
21H	2008-09-03_1402-M300	602/598	0.58	47	Y (long)	some cloud?
21V	2008-09-10_1344-M300	420	0.42	45	Y (long)	clear
21H	2008-09-17_1401-M300	500	0.51	48	Y (long)	clear
21H	2008-09-21_1450-M300	548	0.55	48	Y (long)	clear

21V	2008-09-27_1317-M300	498	0.48	47	Y (long)	clear
-----	----------------------	-----	------	----	----------	-------

### North29

Field Number	Correlator File	Tsys	RMS	Elev	Complete?	Weather
29H	2008-06-29_1830-M300	476	0.51	46	Y(short)	clear
29V	2008-06-29_1927-M300	461	0.45	49	Y	clear
29H	2008-06-29_2029-M300	460	0.47	48	Y	clear
29V	2008-06-29_2131-M300	477	?	47	?	clear
29H	2008-08-20_1548-M300	431/412	0.43	48	Y (long)	Clear
29V	2008-08-23_1535-M300	471/454	0.46	47	Y (long)	clear, light wind.
29H	2008-08-27_1333-M300	469/441	0.46	43	Y (long)	Some light cloud
29V	2008-09-28_1226-M300	547	0.54	45	Y (long)	clear

### North30

Field Number	Correlator File	Tsys	RMS	Elev	Complete?	Weather
30H	2008-06-24_1919-M300	446	0.43	47	Y	clear
30V	2008-06-24_2019-M300	434	0.45	48	Y	clear
30H	2008-06-24_2121-M300	434	0.47	48	Y(short)	clear
30V	2008-06-24_2209-M300	435	0.49	47	Y(short)	clear
30H	2008-08-21_1921-M300	640/652	0.59	46	Y (long)	very cloudy
30H	2008-08-27_1432-M300	453/424	0.49	45	Y (short)	Some light cloud
30V	2008-09-02_1352-M300	460	0.45	44	Y (long)	clear. light wind
30V	2008-09-17_1507-M300	500	0.54	49	Y (short)	clear
30H	2008-09-20_1456-M300	491	0.47	48	Y (long)	clear
30V	2008-09-27_1419-M300	496	0.48	48	Y (long)	clear

### North31

Field Number	Correlator File	Tsys	RMS	Elev	Complete?	Weather
31H	2008-08-17_1413-M300	479/466	0.46	42	Y (long)	very thin, total cover
31V	2008-08-18_1352-M300	511/491	0.49	42	Y (long)	V. windy, clear
31H	2008-08-18_1721-M300	457/447	0.50	48	Y (short)	V. windy, clear
31H	2008-08-22_1530-	570/560	0.53	48	N (long)	V. V. V. windy, cloudy,

	M300						variable Tsys
31H (part)	2008-08-22_1706-M300	528/527	0.71	49	comp. above		V. V. V. windy, cloudy, variable Tsys
31H	2008-08-27_1528-M300	456/441	0.50	47	Y (short)		Some light cloud
31V	2008-09-02_1454-M300	450	0.51	47	Y (short)		clear
31V	2008-09-18_1206-M300	560	0.56	42	Y (long)		clear
31V	2008-09-21_1141-M300	575		42	Y (long)		clear
31H	2008-09-26_1429-M300	436	0.53	49	Y (long)		clear
31V	2008-09-30_1513-M300	420	47	0.42	Y (long)		clear

### North32

Field Number	Correlator File	Tsys	RMS	Elev	Complete?	Weather
32H	2008-09-01_1617-M300	460	0.46	48	Y (long)	clear
32H	2008-09-10_1444-M300	410	0.42	48	Y (long)	clear
32V	2008-09-18_1305-M300	560	0.55	47	Y (long)	some clouds
32V	2008-09-21_1244-M300	542	0.54	45	Y (long)	clear
32H	2008-09-29_1229-M300	506	46	0.50	Y (long)	clear

### North38

Field Number	Correlator File	Tsys	RMS	Elev	Complete?	Weather
38H	2008-06-19_2216-M300	558	0.64	48	Y	fine
38V	2008-06-20_1909-M300	581	0.62	46	Y	puffy cld
38H	2008-06-20_1952-M300	547	0.57	47	Y	clearing
38V	2008-06-20_2049-M300	490	0.57	48	Y	clear
38H	2008-06-20_2132-M300	506	0.57	48	Y	partly cldy
38V	2008-06-20_2223-M300	494	0.53	47	Y	partly cldy, windy
38V	2008-08-19_1601-M300	436/423	0.48	48	Y (short)	clear
38H	2008-09-08_1322-M300	450	0.45	44	Y (long)	clear
38V	2008-09-11_1227-M300	540	0.57	42	Y (long)	clear
38V	2008-09-18_1404-M300	550	0.56	49	Y (long)	few clouds
38H	2008-09-23_1140-M300	479	0.47	42	Y (long)	clear

finished North 38? ---

### North39

Field Number	Correlator File	Tsys	RMS	Elev	Complete?	Weather
39H	2008-06-23_1912-M300	508	0.50	47	Y	clear,breezy
39V	2008-06-23_2015-M300	490	0.48	48	Y	clear,calm
39H	2008-06-23_2114-M300	501	0.50	48	Y	clear
39V	2008-06-23_2212-M300	522	0.58	48	Y(short)	clear
39V	2008-08-19_1653-M300	426/403	0.46	49	Y(short)	clear
39V	2008-08-24_1429-M300	455/448	0.46	45	Y (logn)	Still, clear
39H	2008-09-08_1446-M300	430	0.42	48	Y (long)	clear
39H	2008-09-23_1243-M300	460	0.45	45	Y (long)	clear

### North40

Field Number	Correlator File	Tsys	RMS	Elev	Complete?	Weather
40H	2008-06-26_1856-M300	432	0.43	46	Y	clear
40V	2008-06-26_1955-M300	426	0.42	48	Y	clear
40H	2008-06-26_2054-M300	438	0.46	48	Y (short)	clear
40V	2008-06-26_2152-M300	441	0.48	47	Y (short)	clear
40H	2008-08-19_1756-M300	435/419	0.43	48	Y (long)	clear
40V	2008-08-24_1529-M300	441/423	0.44	47	Y (long)	Still, clear
40V	2008-08-27_1233-M300	495/471	0.46	39	Y (long)	some light cloud
40H	2008-09-30_1412-M300	434	48	0.43	Y (long)	clear

### North41

Field Number	Correlator File	Tsys	RMS	Elev	Complete?	Weather
41V	2008-09-19_1140-M300	619	0.60	41	N (Half map ,acc crashed)	clear
41V	2008-09-20_1246-M300	515	0.60	45	Yes (Long)	clear

### North42

Field Number	Correlator File	Tsys	RMS	Elev	Complete?	Weather
42H	2008-06-27_1833-M300	443	0.45	46	Y	clear
42V	2008-06-27_1933-M300	430	0.43	48	Y	clear
42H	2008-06-27_2032-M300	435	0.44	48	Y	clear
42V	2008-06-27_2131-M300	438	0.49	47	Y(short)	clear

42H	2008-08-19_1856-M300	439/431	0.48	46	Y	clear
42V	2008-09-02_1549-M300	450	0.49	48	Y (short)	clear
42H	2008-09-11_1330-M300	530	0.55	47	Y (long)	clear
42H	2008-09-18_1504-M300	560	0.54	49	Y (long)	some clouds
42V	2008-09-20_1350-M300	501	0.50	47	Y (long)	clear
42V	2008-09-28_1532-M300	492	0.48	47	Y (long)	clear

### North51

Field Number	Correlator File	Tsys	RMS	Elev	Complete?	Weather
51H	2008-06-25_1856-M300	445	0.43	46	Y	clear
51V	2008-06-25_1956-M300	439	0.43	48	Y	clear
51V	2008-06-25_2103-M300	431	0.47	48	Y(short)	clear
51H	2008-06-25_2218-M300	445	0.46	48	Y(short)	clear
51H	2008-08-20_1343-M300	466/443	0.45	41	Y (long)	clear
51H	2008-08-23_1638-M300	458/455	0.5	48	Y (short)	Clear, light wind.
51V	2008-08-29_1244-M300	606/587	0.58	40	Y (long)	Variable Tsys, cloudy
51V	2008-09-08_1220-M300	480	0.48	40	Y (long)	clear
51H	2008-09-29_1538-M300	469	48	0.45	Y (long)	clear

### North52

Field Number	Correlator File	Tsys	RMS	Elev	Complete?	Weather
52H	2008-06-28_1836-M300	428	0.42	46	Y	clear
52V	2008-06-28_1936-M300	420	0.42	48	Y	clear
52H	2008-06-28_2046-M300	416	0.45	48	Y(short)	clear
52V	2008-06-28_2132-M300	421	0.46	47	Y(short)	clear
52H	2008-08-20_1447-M300		0.44		Y(long)	clear
52V	2008-08-24_1629-M300	438/434	0.47	48	Y (long)	still, clear
52H	2008-08-29_1344-M300	537/527	0.55	43	Y (long)	Variable Tsys, cloudy
52V	2008-09-28_1431-M300	503	0.49	47	Y (long)	clear

### North53

Field Number	Correlator File	Tsys	RMS	Elev	Complete?	Weather
53V	2008-09-19_1300-M300	590	0.57	41	N (Half map ,acc crashed)	clear
53V	2008-09-19_1458-M300	555	0.60	48	N (Half map ,acc crashed)	clear
53V	2008-09-19_1555-M300	536	0.65	47	N (Half map ,acc crashed)	clear

53V	2008-09-20_1144-M300	537	0.54	41	Yes (long)	clear
53 H	2008-09-29_1336-M300	488	48	0.49	Y (long)	clear

### North65

Field Number	Correlator File	Tsys	RMS	Elev	Complete?	Weather
65H	2008-08-29_1444-M300	514/485	0.51	46	Y (long)	Variable Tsys, cloudy
65V	2008-09-09_1322-M300	430	0.42	46	Y (long)	clear
65H	2008-09-10_1545-M300	420	0.41	48	Y (long)	clear
65V	2008-09-26_1326-M300	475	0.59	47	Y (long)	clear
65H	2008-09-30_1211-M300	464	45	0.45	Y (long)	clear

### North107

Field Number	Correlator File	Tsys	RMS	Elev	Complete?	Weather
107H	2008-08-17_1617-M300	451/433	0.49	47	Y (short)	seems clear
107V	2008-08-18_1620-M300	452/445	0.46	49	Y (long)	V. windy, clear
107H	2008-08-18_1908-M300	469/457	0.48	45	Y (long)	Clear
107H	2008-08-19_1510-M300	447/439	0.48	47	Y (short)	still, clear
107H	2008-08-23_1436-M300	493/483	0.50	44	Y (long)	clear, light wind
107H	2008-08-24_1329-M300	479/466	0.466	42	Y (long)	still, clear
107V	2008-09-02_1252-M300	490	0.50	30	Y (long)	clear, light wind
107H	2008-09-07_1507-M300	530	0.52	49	Y (long)	clearing up
107V	2008-09-24_1352-M300	484	0.49	47	Y (long)	clear

### North118

Field Number	Correlator File	Tsys	RMS	Elev	Complete?	Weather
118H	2008-08-31_1654-M300	530	0.53	48	Y (long)	cold & still but air still wet
118H	2008-09-07_1358-M300	530	0.53	46	Y (long)	some clouds
118V	2008-09-11_1429-M300	530	0.54	49	Y (long)	clear
118H	2008-09-11_1527-M300	530	0.52	49	Y (long)	clear
118V	2008-09-13_1138-M300	1450	1.35	39	N	clear ++Mopra died in a power failure++
118V	2008-09-17_1203-	520	0.54	45	Y (long)	clear

	M300						
118H	2008-09-22_1311-M300	885	1.16	43	Y (long)	bad weather	
118V	2008-09-24_1146-M300	536	0.53	42	Y (long)	clear	

### North119

Field Number	Correlator File	Tsys	RMS	Elev	Complete?	Weather
119H	2008-09-01_1302-M300	505	0.47	42	Y (long)	cold, light cloud?
119H	2008-09-06_1542-M300	480	0.47	48	Y (long)	clear
119H	2008-09-07_1255-M300	550	0.56	49	Y (long)	some clouds
119H	2008-09-24_1252-M300	500	0.48	46	Y (long)	clear
119V	2008-09-26_1217-M300	494	0.49	45	Y (long)	clear
119V	2008-09-30_1311-M300	447	48	0.44	Y (long)	clear

### North129

Field Number	Correlator File	Tsys	RMS	Elev	Complete?	Weather
129H	2008-09-01_1402-M300	480	0.46	45	Y (long)	cold, clear
129V	2008-09-03_1508-M300	582/579	0.59	47	Y (long)	some cloud
129H	2008-09-06_1335-M300	505	0.50	46	Y (long)	clear
129V	2008-09-12_1207-M300	600	0.59	42	Y (long)	clear
129H	2008-09-22_1021-M300	985	0.97	35	Y (long)	bad weather
129H	2008-09-23_1442-M300	454	0.46	48	Y (long)	clear
129V	2008-09-28_1328-M300	520	0.51	47	Y (long)	clear

### North130

Field Number	Correlator File	Tsys	RMS	Elev	Complete?	Weather
130H	2008-09-01_1504-M300	465	0.47	47	Y (long)	cold, clear
130V	2008-09-03_1612-M300	585	0.59	48	Y (long)	clear
130H	2008-09-06_1235-M300	500	0.51	41	Y (long)	clear
130V	2008-09-12_1306-M300	580	0.59	46	Y (long)	clear
130V	2008-09-22_1149-M300	860	0.82	42	Y (long)	bad weather
130V	2008-09-24_1046-M300	575	0.57	38	Y (long)	clear
130H	2008-09-27_1217-M300	509	0.50	44	Y (long)	clear

### North141



Field Number	Correlator File	Tsys	RMS	Elev	Complete?	Weather
141H	2008-08-17_1515-M300	459/452	0.46	46	Y (long)	very thin, total cover
141V	2008-08-18_1454-M300	482/465	0.46	45	Y (long)	V. windy, clear
141H	2008-08-18_1810-M300	466/464	0.51	48	Y (short)	windy,clear
141V	2008-08-19_1417-M300	460/457	0.50	43	Y (short)	still, clear
141H	2008-08-23_1337-M300	495/478		42	Y (long)	Clear, light wind
141V	2008-08-29_1544-M300	546/530	0.53	48	Y (long)	Variable Tsys, cloudy
141H	2008-09-06_1442-M300	490	0.48	48	Y (long)	clear
141V	2008-09-23_1343-M300	444	0.44	48	Y (long)	clear
141H	2008-09-29_1438-M300	491	48	0.48	Y (long)	clear

**Beam maps, Calibration scans on Orion, and Pointing corrections should be logged on [this page](#).**

Also use [the PtqLog page](#) to keep track of time lost to bad weather, system faults etc.

-- [TonyWong](#) - 29 Jun 2008

This topic: MopraLmc > [WebHome](#) > SmcLog

Topic revision: r67 - 19 Jun 2009 - 07:21:59 - [ErikMuller](#)

Copyright © by the contributing authors. All material on this collaboration platform is the property of the contributing authors.

Ideas, requests, problems regarding Foswiki? [Send feedback](#)

